

Staff Data and Materials Related to the  
**Social Security Act**  
**Disability Programs**

---

**COMMITTEE ON FINANCE**  
**UNITED STATES SENATE**

**ROBERT J. DOLE, *Chairman***



SEPTEMBER 1983

Printed for the use of the Committee on Finance

---

U.S. GOVERNMENT PRINTING OFFICE

WASHINGTON : 1983

## COMMITTEE ON FINANCE

ROBERT J. DOLE, Kansas, *Chairman*

BOB PACKWOOD, Oregon

WILLIAM V. ROTH, Jr., Delaware

JOHN C. DANFORTH, Missouri

JOHN H. CHAFEE, Rhode Island

JOHN HEINZ, Pennsylvania

MALCOLM WALLOP, Wyoming

DAVID DURENBERGER, Minnesota

WILLIAM L. ARMSTRONG, Colorado

STEVEN D. SYMMS, Idaho

CHARLES E. GRASSLEY, Iowa

RUSSELL B. LONG, Louisiana

LLOYD BENTSEN, Texas

SPARK M. MATSUNAGA, Hawaii

DANIEL PATRICK MOYNIHAN, New York

MAX BAUCUS, Montana

DAVID L. BOREN, Oklahoma

BILL BRADLEY, New Jersey

GEORGE J. MITCHELL, Maine

DAVID PRYOR, Arkansas

RODERICK A. DEARMENT, *Chief Counsel and Staff Director*

MICHAEL STERN, *Minority Staff Director*

# CONTENTS

	Page
Introduction.....	1
I. DI Program Cost and Beneficiary Data:	
Tables:	
1. DI program costs, 1957-83.....	5
2. DI beneficiaries, year-by-year, 1957-83.....	6
3. Average DI cash benefits for workers and their dependents, selected years.....	7
4. Persons insured for DI and rates of disability, 1960-82.....	8
5. DI worker beneficiaries compared with adult U.S. population, 1980.....	9
6. New DI worker beneficiary awards compared with number of persons insured for disability, by age, 1980.....	10
7. DI worker beneficiaries: Number, average age, and distribution by age and sex, 1957-80.....	11
8. New DI worker awards by cause of disability and sex, 1979.....	12
9. New DI awards by cause of disability and age, 1979.....	13
10. DI applications, awards, and allowance rates over time.....	14
11. Basis for initial DI allowances, fiscal years 1975-82.....	15
12. Basis for initial DI denials, fiscal years 1975-82....	15
13. Basis for initial DI-worker allowances by age, 1979.....	16
14. DI worker terminations from the rolls, 1957-80.	17
II. Continuing Disability Investigation (CDI) Activity:	
Tables:	
15. Planned and actual continuing disability investigation (CDI) reviews, under various President's budgets.....	21
16. Actual and projected CDI benefit savings.....	21
17. Continuing disability investigation (CDI) activity and State agency workload under the DI program, fiscal years 1980-83.....	22
18. Comparison of continuing disability investigation (CDI) reviews to total DI-worker beneficiaries over the years.....	22
19. Recent DI allowance rates, initial claims and CDI's.....	23

IV

20. Continuing disability investigation (CDI) continuances and terminations by State agencies, DI and SSI combined, fiscal years 1977-83 .....	Page 23
21. State agency continuing disability investigation (CDI) continuances and terminations, DI and SSI/DI concurrent cases, fiscal years 1977-83 .....	24
22. State agency continuing disability investigation (CDI) continuances and terminations, SSI cases, fiscal years 1977-83 .....	25
23. Continuing disability investigations: Summary data March 1981 through June 1983 .....	26
24. Allowance rates for initial DI determinations, initial claims and CDI's, 1970-83 .....	27
25. Administrative law judge allowance rates—Initial DI denials and terminations, fiscal years 1970-83 .....	27
26. Recent allowance rates for initial claims, State by State, DI and SSI combined .....	28
27. Recent allowance rates for initial CDI decisions, State by State, DI and SSI combined .....	30

III. Additional Data on Hearings and Appeals:

Tables:

28. Requests for ALJ hearings—Number of cases received, processed, and pending, fiscal years 1960-83 .....	35
29. Hearings and appeals statistics, fiscal years 1973-83 .....	36
30. Variances in allowance rates of administrative law judges, fiscal year 1982 .....	36

IV. Financing Disability Insurance:

Note .....	39
------------	----

Tables:

31. Estimated assets of the DI trust fund at beginning of year, as a percentage of expenditures during year under present law .....	40
32. Tax rates and the taxable earnings base, past and future .....	41
33. Estimated operations of the OASI, DI, and HI trust funds under present law based on 1983 Trustees' Report intermediate (II-B) assumptions, calendar years 1982-92 .....	42
34. Estimated operations of the OASI, DI, and HI trust funds based on 1983 Trustees' Report alternative III assumptions, calendar years 1982-92 .....	44
35. Long-range OASDHI cost and income projections: 1983 intermediate (II-B) assumptions .....	46
36. Long-range OASDI trust fund reserve ratios: 1983 intermediate (II-B) assumptions .....	47
37. Long-range DI financial forecasts over the years..	48

## V. Supplemental Security Income for the Aged, Blind and Disabled:

### Tables:

38. SSI Federal benefit costs and proportion spent on blind and disabled, 1974-83 .....	Page 51
39. SSI recipients: Total number and proportion blind and disabled, 1974-83 .....	51
40. SSI recipients: Total number and proportion blind and disabled, by State, July 1983 .....	52
41. Number of SSI recipients and average monthly payment, July 1983 .....	54
42. Number of SSI recipients and average monthly payment, by reason for eligibility and type of payment, December 1982 .....	55
43. Number and distribution of SSI recipients, by monthly payment amount, December 1982 .....	56
44. Age distribution of adult SSI recipients, December 1982 .....	57
45. Age distribution of SSI child recipients, by reason for eligibility, December 1982 .....	58
46. Number and distribution of new awards to blind and disabled SSI recipients, by diagnostic group, 1977 .....	59
47. Number of disabled SSI recipients and average monthly payment, by State, December 1982 .....	60
48. Number of blind SSI recipients and average monthly payment, by State, December 1982 .....	62

### VI. Additional Charts:

1. Disability insurance program total costs .....	67
2. Number of new DI worker awards 1970-82 .....	67
3. Disability insurance program allowance rate .....	68
4. DI beneficiaries: Actual and projected .....	69
5. Projected DI benefit costs: 1981-87 .....	69
6. Recent CDI termination rates .....	70
7. Number of SSA ALJ's 1973-83 .....	71
8. Hearing decisions per ALJ .....	71
9. Disability insurance program hearings pending per ALJ .....	72
10. Stages of DI decisionmaking .....	73
11. Disability determinations and appeals, fiscal year 1982 .....	74
12. The disability decision: A sequential evaluation process .....	75
13. Initial eligibility determination process .....	76
14. Continuing disability investigations process .....	77
15. History of significant provisions relating to DI eligibility requirements .....	79
Table 49. DI administrative costs .....	81



## INTRODUCTION

The social security disability insurance program (DI) is the Nation's largest disability connected cash benefit program. Under the DI program and the supplemental security income program (which provides mean-tested benefits to the aged, blind and disabled), the Social Security Administration is responsible for nearly half of all benefit expenditures made from publicly financed disability programs. Over the past 5 years, the Committee on Finance has reviewed the operations of the two social security disability programs on two occasions, first in 1979, and again in 1982.

Responding to the rapid growth of program costs during the 1970's, the committee held public hearings in 1979 and the Congress subsequently enacted the Social Security Disability Amendments of 1980 (P.L. 96-265). Numerous measures were included in the legislation that were intended to address excessive benefit levels, work disincentives and apparent weaknesses in program administration.

One of the administrative requirements of the 1980 legislation has been the source of considerable attention—the requirement that the eligibility of DI beneficiaries be reviewed at least once every 3 years. The provision was adopted because of congressional concern over the lack of monitoring of the benefit rolls and the possibly large number of ineligible continuing to receive benefits. The stepped-up eligibility reviews, known as continuing disability investigations (CDI's), were implemented in March 1981 and have led to the termination of benefits for many individuals. Between March 1981 and June 1983, some 946,000 CDI decisions were rendered by State agencies, of which 421,000 (about 45%) were terminations. In more than half of the cases appealed to administrative law judges, however, benefits have been reinstated.

In 1982, the Committee on Finance once again reviewed the DI program, focusing on the problems that had been highlighted by the implementation of the CDI reviews. Among the issues raised were the adequacy of the disability determination process, the proper standards to be applied in determining whether an individual continues to qualify for benefits, the appropriateness of applying different concepts of disability at the initial and appellate levels of decisionmaking, and the ability of State agencies to handle the new workload. Subsequently, the Congress passed additional disability legislation in 1982 (P.L. 97-455, signed by the President on January 12, 1983) which, among other things, provided relief to terminated beneficiaries pursuing appeals. Under this provision, a beneficiary who is found ineligible for benefits and appeals the decision may elect to receive continued payments pending a decision by the administrative law judge. This provision is scheduled to expire on October 1, 1983.

This document has been prepared to provide the committee with the most recent data available on CDI activity and on the short- and long-range financial condition of the DI trust fund. Basic program data (on the DI program and the SSI program as it relates to the disabled population) is also included. Those interested in a discussion of, and elaboration on, the DI program, and the events leading to the 1980 legislation and the CDI provision in the law should refer to "Staff Data and Materials Related to the Social Security Disability Insurance Program" (CP97-16), which was prepared for the use of the committee in 1982.



---

---

## **I. DI Program Cost and Beneficiary Data**

---

---



TABLE 1.—DI PROGRAM COSTS, 1957–83

[In millions]

Calendar year	Total costs
1957.....	\$59
1958.....	261
1959.....	485
1960.....	600
1961.....	956
1962.....	1,183
1963.....	1,297
1964.....	1,407
1965.....	1,687
1966.....	1,947
1967.....	2,089
1968.....	2,458
1969.....	2,716
1970.....	3,259
1971.....	4,000
1972.....	4,759
1973.....	5,973
1974.....	7,196
1975.....	8,790
1976.....	10,366
1977.....	11,946
1978.....	12,954
1979.....	14,186
1980.....	15,872
1981.....	17,658
1982.....	17,992
1983.....	<sup>1</sup> 17,852

<sup>1</sup> Estimated based on the Intermediate II-B assumptions contained in the 1983 OASDI Trustees' Report. Source: Social Security Bulletin, Annual Statistical Supplement, 1980, and 1983 OASDI Trustees' Report.

TABLE 2.—DI BENEFICIARIES, YEAR-BY-YEAR, 1957–83 <sup>1</sup>

Calendar year	Disabled workers	Total DI beneficiaries <sup>2</sup>
1957.....	149,850	149,850
1958.....	237,719	268,057
1959.....	334,443	460,354
1960.....	455,371	687,451
1961.....	618,075	1,027,089
1962.....	740,867	1,275,105
1963.....	827,014	1,452,472
1964.....	894,173	1,563,366
1965.....	988,074	1,739,051
1966.....	1,097,190	1,970,322
1967.....	1,193,120	2,140,214
1968.....	1,295,300	2,335,134
1969.....	1,394,291	2,487,548
1970.....	1,492,948	2,664,995
1971.....	1,647,684	2,930,008
1972.....	1,832,916	3,271,486
1973.....	2,016,626	3,558,982
1974.....	2,236,882	3,911,334
1975.....	2,488,774	4,352,200
1976.....	2,670,208	4,623,757
1977.....	2,837,432	4,860,431
1978.....	2,879,774	4,868,490
1979.....	2,870,590	4,777,412
1980.....	2,861,253	4,682,172
1981.....	2,776,519	4,456,274
1982.....	2,603,713	3,973,465
1983.....	2,591,361	3,892,599

<sup>1</sup> As of December of each year, except for 1983 which is for the month of June.

<sup>2</sup> Includes spouses and children of disabled workers.

Source: Social Security Bulletin, Annual Statistical Supplement, 1981, supplemented with figures for 1982 and 1983 from the Office of Research and Statistics of the Social Security Administration.

TABLE 3.—AVERAGE DI CASH BENEFITS FOR WORKERS AND THEIR DEPENDENTS,  
SELECTED YEARS

Calendar year <sup>1</sup>	Average monthly benefit			
	Disabled worker	Spouses	Children	Disabled-worker families
<b>Current beneficiaries:</b>				
1970.....	\$131	\$43	\$39	\$272
1975.....	226	67	62	442
1981.....	414	122	111	809
1982.....	443	131	129	851
1983.....	441	129	128	<sup>2</sup> 841
<b>New awards</b>				
1970.....	139	40	37	( <sup>3</sup> )
1975.....	244	73	68	( <sup>3</sup> )
1981.....	439	117	125	( <sup>3</sup> )
1982.....	454	126	130	( <sup>3</sup> )
1983.....	433	120	121	( <sup>3</sup> )

<sup>1</sup> As of June of each year.

<sup>2</sup> For July 1983.

<sup>3</sup> Not available.

Source: Various issues of SSA's "Monthly Benefit Statistics" supplemented with data supplied by the Office of the Actuary, SSA, August 1983.

TABLE 4.—PERSONS INSURED FOR DI AND RATES OF DISABILITY, 1960–82

Calendar year <sup>1</sup>	Persons insured for DI (in millions)	Awards per 1,000 insured workers
1960.....	46.4	4.5
1961.....	48.5	5.8
1962.....	50.5	5.0
1963.....	51.5	4.4
1964.....	52.3	4.0
1965.....	53.3	4.7
1966.....	55.0	5.1
1967.....	55.7	5.4
1968.....	56.9	4.8
1969.....	70.1	4.9
1970.....	72.4	4.8
1971.....	74.5	5.6
1972.....	76.1	6.0
1973.....	77.8	6.3
1974.....	80.4	6.7
1975.....	83.3	7.1
1976.....	85.3	6.5
1977.....	87.0	6.6
1978.....	89.4	5.2
1979.....	93.8	4.4
1980.....	95.6	4.1
1981 <sup>2</sup> .....	96.8	3.6
1982 <sup>2</sup> .....	98.7	3.0

<sup>1</sup> January 1 of each year.

<sup>2</sup> Preliminary.

Source: Office of Actuary, SSA, August 1983.

Note: See also Table 10 in this print for total new awards and allowance rates over time.

TABLE 5.—DI WORKER BENEFICIARIES COMPARED WITH ADULT U.S. POPULATION, 1980

[In percent]

Characteristics	DI worker beneficiaries	Adult U.S. population under age 64 <sup>1</sup>
Ages:		
Total percent .....	100.0	100.0
15 to 29 .....	3.9	41.1
30 to 39 .....	9.1	21.2
40 to 49 .....	14.4	15.6
50 to 59 .....	38.8	15.6
60 to 64 .....	33.7	6.6
Median age .....	56.9	32.5
Sex:		
Male .....	67.4	49.8
Female .....	32.6	50.2

<sup>1</sup> Includes persons ages 15-64 who are residents of the 50 States and the District of Columbia adjusted for net census undercount; civilian residents of Puerto Rico, the Virgin Islands, Guam, and American Samoa; Federal civilian employees and persons in the Armed Forces abroad and their dependents; crew members of Merchant Vessels; and all other citizens abroad.

Source: Derived from tables in the Social Security Bulletin: Annual Statistical Supplement, 1981, supplemented by data supplied by the Office of Research and Statistics of the Social Security Administration and other census data.

TABLE 6.—NEW DI WORKER BENEFICIARY AWARDS COMPARED WITH NUMBER OF PERSONS INSURED FOR DISABILITY, BY AGE, 1980 <sup>1</sup>

Characteristics	In thousands of persons		DI worker awards as percent of insured population
	DI worker awards	Workers insured in event of disability	
Total .....	397	95,578	0.415
Age:			
Under 30 .....	32	36,605	.087
30 to 39 .....	39	21,449	.180
40 to 44 .....	24	7,954	.305
45 to 49 .....	34	7,553	.455
50 to 54 .....	60	7,914	.763
55 to 59 .....	99	7,600	1.299
60 to 64 .....	109	6,504	1.669
Median age .....	55.7	34.0	.....
Sex:			
Male .....	275	58,128	.473
Female .....	121	37,450	.324

<sup>1</sup> Excludes dependents of disabled workers.

Source: Derived from tables in the Social Security Bulletin: Annual Statistical Supplement, 1981, supplemented by data supplied by the Office of Research and Statistics of the Social Security Administration.



TABLE 7.—DI WORKER BENEFICIARIES: NUMBER, AVERAGE AGE, AND DISTRIBUTION BY AGE AND SEX, 1957-80

At end of year	Total number (in thousands)	Average age	Percent of disabled workers, by age								
			Total	Under 30	30-39	40-44	45-49	50-54	55-59	60-64	
			Men								
1957	121	59.4	100.0						18.5	29.9	51.6
1960	356	57.3	100.0	0.5	3.3	3.0	4.9		16.6	26.7	44.9
1965	734	54.4	100.0	1.0	7.5	7.6	10.4		15.4	24.7	33.3
1970	1,069	53.9	100.0	3.3	6.8	6.9	10.9		15.2	23.2	33.7
1975	1,711	53.5	100.0	4.6	7.5	6.2	9.7		15.8	23.2	33.0
1980	1,928	<sup>1</sup> 52.9	100.0	4.1	9.6	6.0	8.9		14.3	24.0	33.1
			Women								
1957	29	57.9	100.0						25.6	39.2	35.2
1960	99	56.7	100.0	0.3	3.2	3.2	5.3		19.4	31.4	37.2
1965	254	55.2	100.0	.6	5.4	6.3	9.8		16.2	27.3	34.3
1970	424	55.0	100.0	1.9	5.1	5.6	10.1		15.9	26.0	35.3
1975	778	54.4	100.0	3.3	6.1	5.3	9.0		16.3	25.5	34.5
1980	931	<sup>1</sup> 53.7	100.0	3.4	8.2	5.3	8.2		14.4	25.4	35.0

<sup>1</sup> Not to be confused with the median age shown on earlier table, which was higher.

Source: Social Security Administration, Office of Research and Statistics, August 1983.

TABLE 8.—NEW DI WORKER AWARDS BY CAUSE OF DISABILITY AND SEX, 1979

	Number of cases	Total	Men	Women
Total number.....	408,680	408,680	281,992	126,688
Total percent.....		100.0	69.0	31.0
		In percent		
Total.....		100.00	100.00	100.0
Infective and parasitic.....	2,704	0.7	0.7	0.7
Neoplasms.....	55,643	13.6	12.7	15.6
Endocrine, nutritional, and metabolic.....	14,280	3.5	2.0	4.8
Blood and blood-forming organs.....	1,236	0.3	0.3	0.3
Mental disorders.....	46,345	11.3	10.8	12.5
Nervous system and sense organs.....	30,966	7.6	7.7	9.5
Circulatory system.....	115,578	28.3	31.8	20.5
Respiratory system.....	25,864	6.3	6.8	5.3
Digestive system.....	9,263	2.3	2.3	2.1
Genitourinary system.....	3,455	0.8	0.8	1.0
Skin and subcutaneous tissue.....	1,757	0.4	0.3	0.7
Musculoskeletal system.....	70,511	17.3	15.4	21.3
Congenital anomalies.....	3,657	0.9	0.9	0.8
Accidents.....	26,438	6.5	7.3	4.6
Other.....	839	0.2	0.2	0.2
Unknown.....	144	0.0	0.0	0.1

Source: Social Security Administration, Office of Research and Statistics, "Characteristics of Social Security Disability Beneficiaries, 1977-1979," August 1983.

TABLE 9.—NEW DI AWARDS BY CAUSE OF DISABILITY AND AGE, 1979

	Number of cases	Total percent	Age		
			Under 35	35 to 49	50 and over
Total number .....	408,680		55,796	86,589	266,295
Total percent .....		100.0	13.7	21.2	65.2
			In percent		
Infective and parasitic .....	2,704	100.0	19.4	28.0	52.6
Neoplasms .....	55,643	100.0	7.0	20.6	72.3
Endocrine, nutritional, and metabolic .....	14,280	100.0	10.6	23.3	66.1
Blood and blood-forming organs .....	1,236	100.0	28.3	23.0	48.6
Mental disorders .....	46,345	100.0	40.5	27.8	31.8
Nervous system and sense organs .....	30,966	100.0	24.9	24.2	50.9
Circulatory system .....	115,578	100.0	2.2	16.9	81.0
Respiratory system .....	25,864	100.0	1.7	12.9	85.5
Digestive system .....	9,263	100.0	9.5	28.5	61.9
Genitourinary system .....	3,455	100.0	18.9	23.6	57.5
Skin and subcutaneous tissue .....	1,757	100.0	16.5	28.4	55.1
Musculoskeletal system .....	70,511	100.0	10.3	22.2	67.5
Congenital anomalies .....	3,657	100.0	32.3	25.2	42.5
Accidents .....	26,438	100.0	37.0	25.1	37.9
Other .....	839	100.0	9.1	31.8	59.1
Unknown .....	144	100.0	5.3	57.4	37.2

Source: Social Security Administration, Office of Research and Statistics, "Characteristics of Social Security Disability Beneficiaries, 1977-1979," August 1983.

TABLE 10.—DI APPLICATIONS, AWARDS, AND ALLOWANCE RATES OVER TIME

Calendar year	Applications received in district offices (thousands)	New disabled-worker awards (thousands)	Allowance rate <sup>1</sup> (in percent)	Total new awards <sup>2</sup> (thousands)
1969.....	725.1	344.7	48	753.1
1970.....	868.2	350.8	40	763.2
1971 <sup>3</sup> .....	924.4	415.9	45	901.3
1972.....	947.8	455.4	48	991.6
1973.....	1,066.9	491.6	46	1,033.6
1974.....	1,330.2	536.0	40	1,111.9
1975.....	1,267.2	592.0	47	1,256.0
1976 <sup>3</sup> .....	1,232.2	551.5	45	1,210.7
1977.....	1,235.2	<sup>4</sup> 569.0	46	1,239.4
1978.....	1,184.7	464.4	39	1,045.5
1979.....	1,187.8	408.7	34	921.2
1980.....	1,262.3	389.2	31	884.0
1981.....	1,161.3	345.3	30	787.3
1982.....	1,020.0	298.6	29	641.4

<sup>1</sup> Allowance rate is defined here as total awards divided by total applications.

<sup>2</sup> Awards to workers and their dependents combined.

<sup>3</sup> 1971 and 1976 contained 53 report weeks; all other years contain 52 report weeks.

<sup>4</sup> It appears that a shortening of processing lags between allowance and award due to improvements in the automated claims processing system resulted in processing a substantial number of awards in 1977 that otherwise would have been processed in 1978.

Source: Social Security Administration, Office of Research and Statistics, August 1983.

TABLE 11.—BASIS FOR INITIAL DI ALLOWANCES, FISCAL YEARS 1975–82

[In percent]

Fiscal year	Meets listing	Equals listing	Medical and vocational considerations
1965.....	52	32	16
1970.....	39	43	18
1975.....	30	44	27
1976.....	29	45	26
1977.....	34	42	24
1978.....	46	32	23
1979.....	55	23	22
1980.....	62	14	24
1981.....	64	12	24
1982.....	73	9	19

Source: Ways and Means Committee Print, 97-3, March 16, 1981, as updated by the Office of Research and Statistics, SSA, August 1983.

TABLE 12.—BASIS FOR INITIAL DI DENIALS, FISCAL YEARS 1975–82

[In percent]

Fiscal year	Failure to meet 12-mo. duration	Slight impairment	Able to perform usual work	Able to perform other work	All other <sup>1</sup>
1975.....	19.6	8.4	44.3	18.2	9.5
1976.....	19.9	10.8	41.9	20.1	7.3
1977.....	21.2	24.8	30.0	15.7	8.3
1978.....	21.1	31.8	25.0	14.6	7.5
1979.....	20.0	41.6	21.5	12.5	4.4
1980.....	20.6	39.0	23.7	12.7	3.9
1981.....	19.6	39.0	24.3	13.0	4.0
1982.....	17.6	43.5	18.8	11.3	8.8

<sup>1</sup> Such as failure to cooperate or performing SGA.

Source: Social Security Administration, Office of Research and Statistics, August 1983.

TABLE 13.—BASIS FOR INITIAL DI-WORKER ALLOWANCES BY AGE, 1979

Basis for allowance	Total	Age						60 and over	
		Under 30	30-34	35-39	40-44	45-49	50-54		55-59
Total number .....	408,680	37,693	18,103	20,937	25,613	40,039	70,771	110,114	85,411
Total percent .....	100.0	100.0	100.0	100.0	100.0	100.0	100.0	100.0	100.0
		In percent							
Severe impairment—meets medical listings.....	44.4	55.9	48.6	47.0	45.7	47.1	44.3	41.0	40.6
Severe impairment—equals medical listings .....	18.0	23.1	20.2	19.6	19.6	20.1	17.8	15.8	16.6
Adverse vocational factors.....	19.7	5.7	5.4	3.9	4.0	5.1	16.8	28.3	35.8
Older/unskilled worker .....	0.1	0.0	0.0	0.0	0.0	0.0	0.1	0.1	0.2
Basis for allowance unknown .....	17.8	15.4	25.9	29.5	30.7	27.8	21.1	14.8	6.9

Source: Social Security Administration, Office of Research and Statistics, "Characteristics of Social Security by Disability Insurance Beneficiaries, 1977-1979," August 1983.

TABLE 14.—DI WORKER TERMINATIONS FROM THE ROLLS, 1957-80

Calendar year	Average DI worker beneficiaries during year (in thousands)	Number of terminations		Gross termination rates (per thousand beneficiaries)		
		Death	Recovery <sup>1</sup>	Death	Recovery <sup>1</sup>	Death or recovery
1957.....	81	8,931	52	110.1	0.6	110.7
1958.....	201	28,099	1,397	152.2	7.6	159.8
1959.....	289	42,771	3,228	136.7	10.3	147.0
1960.....	397	43,543	3,124	109.6	7.9	117.5
1961.....	540	60,538	2,936	112.1	5.4	117.5
1962.....	684	67,020	9,555	97.9	14.0	111.9
1963.....	790	73,344	12,931	92.9	16.4	109.3
1964.....	867	75,812	16,487	87.5	19.0	106.5
1965.....	948	79,823	18,441	84.2	19.4	103.6
1966.....	1,053	84,399	23,111	80.1	21.9	102.0
1967.....	1,159	92,084	37,151	79.5	32.1	111.6
1968.....	1,259	99,924	37,723	79.4	30.0	109.4
1969.....	1,360	108,762	38,108	79.9	28.0	107.9
1970.....	1,460	105,799	40,802	72.5	27.9	100.4
1971.....	1,586	109,883	42,981	69.3	27.1	96.4
1972.....	1,754	108,663	39,393	62.0	22.5	84.5
1973.....	1,937	125,582	36,696	64.8	18.9	83.7
1974.....	2,129	135,083	<sup>2</sup> 38,000	63.4	<sup>2</sup> 17.8	<sup>2</sup> 81.2
1975.....	2,391	139,809	<sup>2</sup> 39,000	58.5	<sup>2</sup> 16.3	<sup>2</sup> 74.8
1976.....	2,615	137,889	<sup>2</sup> 40,000	52.7	<sup>2</sup> 15.3	<sup>2</sup> 68.0
1977.....	2,781	140,340	<sup>2</sup> 60,000	50.5	<sup>2</sup> 21.6	<sup>2</sup> 72.1
1978.....	2,882	140,620	64,144	48.8	22.3	71.1
1979.....	2,893	143,023	72,325	49.4	25.0	74.4
1980.....	2,876	142,454	61,762	49.5	21.5	71.0

<sup>1</sup> Recovery means medical improvement, return to work, or other findings of ineligibility.

<sup>2</sup> Numbers of recovery terminations have been estimated for years 1974 through 1977 on the basis of data from other sources.

Source: Experience of Disabled Worker Beneficiaries under OASDI, 1974-78, Actuarial Study No. 81, April 1980, supplemented by data supplied by Office of Research and Statistics of the Social Security Administration.

Note: Excludes cases converted to retirement program due to attainment of age 65.





---

---

## **II. Continuing Disability Investigation (CDI) Activity**

---

---



TABLE 15.—PLANNED AND ACTUAL CONTINUING DISABILITY INVESTIGATION (CDI) REVIEW, UNDER VARIOUS PRESIDENT'S BUDGETS <sup>1</sup>

	Planned and actual number of CDI reviews				
	Fiscal years				
	1981	1982	1983	1984	1985
Fiscal year 1982 budget:					
Planned.....	165,000	360,000			
Actual.....	93,000	337,000			
Fiscal year 1983 budget:					
Planned.....		415,000	654,000		
Actual.....		337,000			
Fiscal year 1984 budget:					
Planned.....			465,000	453,000	
Revision due to June 1983 Initiatives:					
Projected.....			335,000	312,000	282,000

<sup>1</sup> Includes only the new CDI's to be conducted under the 3-year periodic review provision of the 1980 disability amendments (PL 96-265).

Source: SSA, September 1983.

TABLE 16.—ACTUAL AND PROJECTED CDI BENEFIT SAVINGS <sup>1</sup>

[In millions]

	March 1981— September 1981	Fiscal years			
		1982	1983	1984	1985
CDI benefit savings .....	\$50	\$250	\$600	\$850	\$1,000

<sup>1</sup> Estimates for 1981 and fiscal year 1982 are based on actual DI terminations; projections for fiscal years 1983-85 are based on 1984 Budget assumptions, revised to take account of the Administration's initiatives in June 1983.

Source: SSA, September 1983.

TABLE 17.—CONTINUING DISABILITY INVESTIGATION (CDI) ACTIVITY AND STATE AGENCY WORKLOAD UNDER THE DI PROGRAM, FISCAL YEARS 1980-83 <sup>1</sup>

Fiscal year	Total DI and concurrent cases	
	Sent to State agencies	State agency decisions <sup>2</sup>
1980 .....	123,310	94,550
1981 .....	310,120	168,922
1982 .....	492,930	401,182
1983:		
October 1982 to December 1982 .....	83,667	95,147
January 1983 to March 1983 .....	126,549	112,323
April 1983 to June 1983 .....	162,563	134,002

<sup>1</sup> Includes DI and concurrent DI/SSI cases. Excludes purely SSI disability cases.

<sup>2</sup> These figures exclude CDI's where the State agency has not had to make a new medical determination of disability.

Source: SSA, August 1983.

TABLE 18.—COMPARISON OF CONTINUING DISABILITY INVESTIGATION (CDI) REVIEWS TO TOTAL DI-WORKER BENEFICIARIES OVER THE YEARS

Fiscal year	CDI reviews <sup>1</sup>	CDI's per 1,000 DI-worker beneficiaries <sup>2</sup>
1970 .....	<sup>3</sup> 167,000	111.8
1973 .....	<sup>3</sup> 142,000	70.4
1974 .....	<sup>3</sup> 120,000	53.6
1975 .....	<sup>3</sup> 116,000	46.6
1976 .....	103,509	38.8
1977 .....	128,241	45.3
1978 .....	103,153	35.8
1979 .....	113,384	39.5
1980 .....	115,030	40.2
1981 .....	204,343	72.1
1982 .....	455,219	187.8

<sup>1</sup> DI and concurrent cases only. Includes all cases reviewed, even those where no decision was rendered (the review was terminated, for instance, because it was learned that the beneficiary had died or attained age 65 and converted to the retirement rolls).

<sup>2</sup> Based on average number of DI worker beneficiaries during the year, except for 1981 and 1982 which are based on June 30 enrollment.

<sup>3</sup> Figures provided by SSA in 1977, but not currently verifiable.

Source: SSA, August 1983.

TABLE 19.—RECENT DI ALLOWANCE RATES, INITIAL CLAIMS AND CDI'S

Level of adjudication	Percent of cases allowed			
	Initial claims		CDI's	
	January to March 1983	April to June 1983	January to March 1983	April to June 1983
Initial.....	30.4	32.3	54.2	61.0
Reconsideration .....	12.2	13.2	15.2	15.2
Hearing .....	50.0	50.0	61.0	62.0

Source: SSA, August 1983.

TABLE 20.—CONTINUING DISABILITY INVESTIGATION (CDI) CONTINUANCES AND TERMINATIONS BY STATE AGENCIES, DI AND SSI COMBINED, FISCAL YEARS 1977-83

Fiscal year	Total CDI reviews <sup>1</sup>	Number of State agency CDI decisions	Continu- ances	Termina- tions	Continu- ance rate <sup>2</sup> (per- cent)	Termina- tion rate <sup>2</sup> (per- cent)
1977.....	192,000	150,305	92,529	57,776	62	38
1978.....	149,000	118,819	64,097	54,722	54	46
1979.....	165,000	134,462	72,353	62,109	54	46
1980.....	160,000	129,084	69,505	59,579	54	46
1981.....	257,000	208,934	110,134	98,800	53	47
1982.....	497,000	435,247	239,787	195,460	55	45
1983:						
October 1982 to December 1982.....	122,318	101,175	54,665	46,510	54	46
January 1983 to March 1983.....	141,467	120,835	66,081	54,754	55	45
April 1983 to June 1983.....	193,573	142,601	87,486	55,115	61	39

<sup>1</sup> Reflects all cases reviewed by State agencies, including those in which no decision was rendered (the review was terminated, for instance, because it was learned that the beneficiary had died or attained age 65 and converted to the retirement rolls).

<sup>2</sup> Reflects continuance and cessation rates only at the initial State agency level—not at the district office or at the hearing or appeal levels of adjudication.

Source: SSA, August, 1983.

TABLE 21.—STATE AGENCY CONTINUING DISABILITY INVESTIGATION (CDI) CONTINUANCES AND TERMINATIONS, DI AND SSI/DI CONCURRENT CASES <sup>1</sup>,  
FISCAL YEARS 1977-83

Fiscal year	DI cases				SSI/DI cases			
	Continuances	As percent of total reviews	Terminations	As percent of total reviews	Continuances	As percent of total reviews	Terminations	As percent of total reviews
1977 .....	51,270	62	31,287	38	14,475	59	10,188	41
1978 .....	35,800	54	30,715	46	9,004	53	8,132	47
1979 .....	38,386	52	35,474	48	10,482	52	9,742	48
1980 .....	40,228	54	34,798	46	10,049	51	9,475	49
1981 .....	73,539	52	66,742	48	14,427	50	14,214	50
1982 .....	200,457	56	159,733	44	20,877	51	20,124	49
1983:								
October 1982 to December 1982 .....	46,644	54	39,840	46	4,545	52	4,118	47
January 1983 to March 1983 .....	55,532	54	47,602	46	5,299	58	3,890	42
April 1983 to June 1983 .....	73,843	61	47,846	39	7,915	64	4,398	36

<sup>1</sup> State agency medical determinations only. The figures exclude CDI's where a medical determination of disability by the State agency was not required.  
Source: SSA, August 1983.

TABLE 22.—STATE AGENCY CONTINUING DISABILITY INVESTIGATION (CDI) CONTINUANCES AND TERMINATIONS, SSI CASES,<sup>1</sup> FISCAL YEARS 1977-83

Fiscal year	SSI cases			
	Continuances	As percent of total reviews	Terminations	As percent of total reviews
1977 .....	26,784	62	16,301	38
1978 .....	19,293	55	15,875	45
1979 .....	23,485	58	16,893	42
1980 .....	19,228	56	15,306	44
1981 .....	22,168	55	17,844	45
1982 .....	18,453	54	15,603	46
1983:				
October 1982 to December				
1982 .....	3,476	58	2,552	42
January 1983 to March				
1983 .....	5,250	62	3,262	38
April 1983 to June 1983 .....	5,728	67	2,871	33

<sup>1</sup> State agency medical determinations only. The figures exclude CDI's where a medical determination of disability by the State agency was not required.

Source: SSA, August 1983.

TABLE 23.—CONTINUING DISABILITY INVESTIGATIONS: SUMMARY DATA MARCH 1981 THROUGH JUNE 1983

[DI and SSI cases<sup>1</sup>]

Period	Initial State Agency Decisions					Reconsiderations					Hearings <sup>1</sup>		
	Total cases reviewed	Total decisions made	Continuances	Terminations	Total decisions made	Continuances	Terminations	Total decisions made	Continuances	Terminations	Continuances	Terminations	Dismissals
3/81-9/81 .....	180,000	146,000	76,000	70,000	( <sup>2</sup> )	( <sup>2</sup> )	( <sup>2</sup> )	( <sup>2</sup> )	( <sup>2</sup> )	( <sup>2</sup> )	( <sup>2</sup> )	( <sup>2</sup> )	( <sup>2</sup> )
10/81-9/82 .....	497,000	435,000	240,000	195,000	96,000	12,000	84,000	341,000	325,000	313,000	313,000	33,000	33,000
10/82-6/83 <sup>4</sup> .....	457,000	365,000	208,000	156,000	116,000	18,000	98,000	585,000	552,000	528,000	528,000	55,000	55,000
Total .....	1,134,000	946,000	524,000	421,000	( <sup>2</sup> )	( <sup>2</sup> )	( <sup>2</sup> )	( <sup>2</sup> )	( <sup>2</sup> )	( <sup>2</sup> )	( <sup>2</sup> )	( <sup>2</sup> )	( <sup>2</sup> )

<sup>1</sup> Data on Appeals Council CDI decisions are not available for any portion of the 3/81 to 7/83 period.<sup>2</sup> Not available.<sup>3</sup> 2/82-9/82 period. No data on CDI hearing decisions are available prior to February 1982.<sup>4</sup> Preliminary data.<sup>5</sup> 10/82-7/83.

Source: SSA, September 1983.



TABLE 24.—ALLOWANCE RATES FOR INITIAL DI DETERMINATIONS, INITIAL CLAIMS AND CDI'S, 1970-83

[In percent]

Calendar year/fiscal year <sup>1</sup>	Initial claims <sup>2</sup>	CDI's <sup>2</sup>
1970.....	44	(3)
1974.....	40	(3)
1975.....	40	(3)
1976.....	39	(3)
1977.....	38	62
1978.....	42	54
1979.....	39	52
1980.....	33	54
1981.....	29	52
1982.....	28	55
1st qtr./1983.....	30	54
2nd qtr./1983.....	32	61

<sup>1</sup> Initial claims data are on calendar year basis; CDI data are on fiscal year basis.

<sup>2</sup> Includes only determinations made by State agencies involving medical determinations. Does not include reconsiderations or later appeal decisions.

<sup>3</sup> Not available.

Source: Bellmon Report, and SSA, August 1983.

TABLE 25.—ADMINISTRATIVE LAW JUDGE ALLOWANCE RATES—INITIAL DI DENIALS AND TERMINATIONS, FISCAL YEARS 1970-83

[In percent]

Fiscal year	Total cases	Initial claims	CDI cases
1970.....	43	(2)	(2)
1974.....	48	(2)	(2)
1975.....	49	(2)	(2)
1976.....	46	(2)	(2)
1977.....	49	(2)	(2)
1978.....	52	(2)	(2)
1979.....	57	(2)	(2)
1980.....	60	(2)	(2)
1981.....	60	(2)	(2)
1982.....	58	<sup>3</sup> 55	<sup>3</sup> 66
1983 <sup>1</sup> .....	57	52	63

<sup>1</sup> First 9 months of fiscal year.

<sup>2</sup> Operating statistics do not differentiate ALJ decisions by type of case prior to February 1982.

<sup>3</sup> February 1982-September 1982 period.

Source: Social Security Administration, Office of Hearings and Appeals, August 1983.

TABLE 26.—RECENT ALLOWANCE RATES FOR INITIAL CLAIMS,<sup>1</sup> STATE BY STATE, DI AND SSI COMBINED

[In percent]

State	Allowance rates	
	Fiscal years	
	1981	1982
Rhode Island.....	41.5	41.2
South Dakota.....	41.3	39.3
Vermont.....	41.2	34.9
Nebraska.....	40.2	36.8
Alaska.....	39.5	35.9
Delaware.....	38.9	41.1
Wisconsin.....	38.6	36.7
District of Columbia.....	38.5	36.9
Minnesota.....	37.2	40.3
Utah.....	36.6	36.3
Arizona.....	36.5	34.6
Iowa.....	36.1	35.5
Hawaii.....	35.6	37.3
Indiana.....	34.7	30.4
Kansas.....	34.6	32.8
Maine.....	34.3	36.9
Connecticut.....	33.9	35.2
North Carolina.....	33.9	31.5
New Jersey.....	33.7	29.5
Missouri.....	33.0	30.8
Ohio.....	32.8	31.0
North Dakota.....	32.8	34.6
Illinois.....	32.6	27.3
Montana.....	32.5	30.8
Pennsylvania.....	31.9	31.2
New Hampshire.....	31.6	36.5
Colorado.....	31.6	31.5
Nevada.....	31.5	30.5
Wyoming.....	31.1	35.5
Virginia.....	31.0	31.5
South Carolina.....	30.9	29.0
Oregon.....	30.9	28.4
Washington.....	30.8	31.5
Florida.....	30.7	29.5
Texas.....	30.3	29.2
Tennessee.....	30.2	29.3

TABLE 26.—RECENT ALLOWANCE RATES FOR INITIAL CLAIMS,<sup>1</sup> STATE BY STATE, DI AND SSI COMBINED—Continued

[In percent]

State	Allowance rates	
	Fiscal years	
	1981	1982
Idaho.....	29.6	30.3
California.....	28.9	27.5
Oklahoma.....	28.7	28.5
Kentucky.....	28.5	30.1
Maryland.....	28.2	28.7
Massachusetts.....	28.0	30.6
Michigan.....	27.8	26.7
Alabama.....	27.6	26.8
Mississippi.....	27.5	27.0
Georgia.....	25.7	24.7
New York.....	25.4	22.3
West Virginia.....	25.3	24.1
Louisiana.....	25.2	23.6
New Mexico.....	25.1	23.0
Arkansas.....	24.3	25.9
Puerto Rico.....	19.3	17.7

<sup>1</sup> Does not take appellate actions into account and excludes non-medical determinations. Numbers include one count for each concurrent (DI-SSI) case.

Source: SSA, August 1983.

TABLE 27.—RECENT ALLOWANCE RATES FOR INITIAL CDI DECISIONS,<sup>1</sup> STATE BY STATE, DI AND SSI COMBINED

[In percent]

State	Allowance rates	
	October 1981– May 1982	Fiscal year 1982
South Dakota .....	79.6	76.2
Alaska .....	72.8	67.7
New Hampshire .....	69.8	67.7
Hawaii .....	69.6	70.7
Nebraska .....	69.3	64.5
Minnesota .....	68.3	65.7
Vermont .....	67.6	66.4
Wyoming .....	67.6	68.0
Washington .....	67.0	65.1
Delaware .....	66.1	70.4
Maryland .....	64.5	64.4
North Dakota .....	63.5	62.0
Utah .....	62.6	62.5
Iowa .....	62.6	65.2
Colorado .....	62.2	60.3
Montana .....	61.3	58.4
Arizona .....	60.8	60.8
Missouri .....	60.4	60.5
North Carolina .....	60.2	60.6
Mississippi .....	60.1	57.3
Massachusetts .....	59.9	63.2
Oregon .....	59.7	59.9
Virginia .....	59.4	57.8
Connecticut .....	59.3	59.8
Kentucky .....	58.3	61.4
South Carolina .....	58.0	58.5
Ohio .....	57.9	57.2
Maine .....	57.8	59.4
Nevada .....	57.7	55.5
District of Columbia .....	57.4	61.3
Kansas .....	56.6	60.1
Alabama .....	56.2	58.1
West Virginia .....	55.9	57.0
Rhode Island .....	55.7	59.2
Indiana .....	55.4	53.8
Pennsylvania .....	55.3	56.9
Tennessee .....	54.8	60.5

TABLE 27.—RECENT ALLOWANCE RATES FOR INITIAL CDI DECISIONS,<sup>1</sup> STATE BY STATE, DI  
AND SSI COMBINED—Continued

[In percent]

State	Allowance rates	
	October 1981– May 1982	Fiscal year 1982
Michigan .....	54.5	55.8
Florida .....	54.1	55.7
Georgia .....	53.5	53.5
Illinois .....	52.4	52.2
California .....	52.1	52.2
Idaho .....	51.5	51.2
Oklahoma .....	51.5	52.7
Wisconsin .....	49.8	49.0
Texas .....	49.0	51.0
New Jersey .....	48.7	48.6
Arkansas .....	48.2	49.3
New York .....	47.5	51.6
Louisiana .....	46.8	45.9
New Mexico .....	38.8	42.5
Puerto Rico .....	29.0	27.7

<sup>1</sup> Does not take appellate actions into account and excludes non-medical determinations. Numbers include one count for each concurrent (OASDI/SSI) case.

Source: SSA, August 1983.



---

---

### **III. Additional Data on Hearings and Appeals**

---

---





TABLE 28.—REQUESTS FOR ALJ HEARINGS—NUMBER OF CASES RECEIVED, PROCESSED,  
AND PENDING,<sup>1</sup> FISCAL YEARS 1960–83

Fiscal years	Requests received	Processed	Pending (end of year)
1960.....	13,778	20,262	5,959
1965.....	23,323	23,393	6,454
1966.....	22,634	23,434	5,654
1967.....	20,742	20,081	6,315
1968.....	26,946	25,939	7,322
1969.....	34,244	31,912	9,654
1970.....	42,573	38,480	13,747
1972.....	103,691	61,030	63,534
1974.....	121,504	80,783	77,233
1975.....	154,962	121,026	111,169
1976 (15 mo).....	203,106	229,359	84,916
1977.....	193,657	186,822	91,751
1978.....	196,428	215,445	74,747
1979.....	226,240	210,775	90,212
1980.....	252,023	232,590	109,636
1981.....	281,737	262,609	128,164
1982 <sup>2</sup> .....	320,680	296,548	152,896
1983 <sup>2</sup> .....	357,200	366,406	143,690

<sup>1</sup> Includes DI, OASI, SSI, HI and Black Lung cases. The vast majority are disability related.

<sup>2</sup> Estimated.

Source: Estimates provided by SSA, OHA, August 1983.

(35)

TABLE 29.—HEARINGS AND APPEALS STATISTICS, FISCAL YEARS 1973–83

Fiscal year	Average number of ALJ's on duty <sup>1</sup>	Average support staff ratio <sup>2</sup>	Average hearings received per ALJ <sup>3</sup>	Average monthly dispositions per ALJ <sup>1</sup>	Average number of cases pending per ALJ <sup>1</sup>
1973.....	420	2.2	172	14	117
1974.....	478	2.7	254	13	122
1975.....	591	2.9	262	16	173
1976.....	647	3.6	244	21	153
1977.....	629	3.8	308	25	136
1978.....	657	3.9	299	27	128
1979.....	655	4.3	345	27	141
1980.....	669	4.4	377	30	169
1981.....	699	4.4	403	32	188
1982.....	754	4.7	425	34	203
1983 <sup>4</sup> .....	802	4.5	340	<sup>4</sup> 36	<sup>5</sup> 228

<sup>1</sup> ALJ average dispositions are calculated to include the learning curve for new ALJs. Beginning fiscal year 1983, excludes ALJs on leave in excess of 30 consecutive calendar days.

<sup>2</sup> Permanent staff fiscal year 1973–1978; fiscal year 1979–1982 includes temporary positions; beginning fiscal year 1983 includes only hearing office full-time permanent staff.

<sup>3</sup> Number of hearings received divided by average number of ALJs on duty, not productive work months.

<sup>4</sup> Average for first nine months of fiscal year.

<sup>5</sup> As of June 30, 1983.

Source: SSA, Office of Hearings and Appeals. 1982.

TABLE 30.—VARIANCES IN ALLOWANCE RATES OF ADMINISTRATIVE LAW JUDGES, FISCAL YEAR 1982 <sup>1</sup>

Allowance rate in percent	Number of ALJs	Percent of ALJs
0 to 10.....	0	.....
11 to 25.....	12	1.6
26 to 45.....	186	27.3
46 to 65.....	354	54.0
66 to 89.....	120	17.1
90 to 100.....	0	.....

<sup>1</sup> This table reflects the extent to which State agency decisions (initial denials and CDI terminations) which are appealed are subsequently reversed (and thus benefits granted) by an ALJ. Only reflects average monthly rates for fully experienced and on duty ALJs during the period (672 ALJs).

Source: Social Security Administration, Office of Hearings and Appeals, August 1983.

---

---

## **IV. Financing Disability Insurance**

---

---



## NOTE

A tabular presentation of the short- and long-range financial condition of the DI trust fund is included in this section. The estimates are based on the assumptions underlying the 1983 OASDI Board of Trustees Report, in particular, the Intermediate II-B assumptions.

These estimates should be viewed with a degree of caution. The financial condition of the DI trust fund has been extremely volatile over the years and the costs of the program have proven to be highly sensitive to changes in administration and the adjudicative climate in which decisions are rendered. Under the intermediate II-B assumptions, total enrollment in the program is projected to decline from approximately 3.9 million persons in June 1983 to 3.75 million persons in June 1985. This assumes that terminations continue at a high level, actually exceeding the number of new entrants to the program over the next two years. The changing adjudicative climate in the past six to nine months and the recent decline in termination rates suggest that this may now be unlikely.

It also should be noted that the 1983 Trustees' Report estimates do not reflect the costs of the recent administrative measures announced by Secretary Heckler in June of this year. Under the intermediate II-B assumptions, the low point of DI reserves (after 1983) would occur in 1987 when reserves would be equal to 28 percent of outgo. Under the high-cost assumptions for the Administration's June 1983 initiatives, the Office of the Actuary now projects that DI reserves could fall to as low as 11 percent of outgo in 1988, as a consequence of some \$5 billion in additional benefit costs over the next five years. This is illustrated in the next table.

TABLE 31.—ESTIMATED ASSETS OF THE DI TRUST FUND AT BEGINNING OF YEAR, AS A PERCENTAGE OF EXPENDITURES DURING YEAR UNDER PRESENT LAW <sup>1</sup>

[In percent]

	Calendar year						
	1983	1984	1985	1986	1987	1988	1989
Disability insurance:							
Present law, as shown in 1983 trustees report .....	15	38	32	29	28	30	38
Present law, adjusted to reflect administrative changes and initiatives not included in Trustees Report, assuming following illustrative mental impairment proportions (see footnote) and repayment of loans by OASI in 1989: <sup>2</sup>							
10 to 20 percent .....	15	38	32	28	26	26	33
25 to 40 percent .....	15	38	31	25	22	20	25
50 to 70 percent .....	15	37	29	22	16	11	13

<sup>1</sup> Based on intermediate (II-B) assumptions contained in 1983 OASDI Trustees Report.

<sup>2</sup> The financial effect of the initiatives would depend on the proportions of current mental impairment denials and terminations that would be allowed or continued as a result of revising the eligibility criteria. Those proportions will not be known until some months after the revisions are made. Illustrative cost estimates for this initiative are shown below under various assumptions concerning such proportions:

Characterization of assumptions	Proportion of initial denials changed to allowances (percent)	Proportion of CDI terminations changed to continuances (percent)	Additional OASDI benefit payments during 1984-88 (in millions)
Minor effect .....	10	20	\$1,110
Intermediate effect .....	25	40	2,680
Major effect .....	50	70	5,050

Source: Social Security Administration, Memo from the Office of the Actuary, Sept. 12, 1983.

TABLE 32.—TAX RATES AND THE TAXABLE EARNINGS BASE, PAST AND FUTURE

Calendar Year	Taxable earnings base	Tax rate (percent)			
		Employer and employee, each		Self-employed persons	
		DI	OASDHI	DI	OASDHI
1957.....	4,200	0.25	2.25	0.375	3.375
1959.....	4,800	.25	2.5	.375	3.75
1960.....	4,800	.25	3.0	.375	4.5
1962.....	4,800	.25	3.125	.375	4.7
1963.....	4,800	.25	3.625	.375	5.4
1966.....	6,600	.35	4.2	.525	6.15
1967.....	6,600	.35	4.4	.525	6.4
1968.....	7,800	.475	4.4	.7125	6.4
1969.....	7,800	.475	4.8	.7125	6.9
1970.....	7,800	.55	4.8	.825	6.9
1971.....	7,800	.55	5.2	.825	7.5
1972.....	9,000	.55	5.2	.825	7.5
1973.....	10,800	.55	5.85	.795	8.0
1974.....	13,200	.575	5.85	.815	7.9
1975.....	<sup>1</sup> 14,100	.575	5.85	.815	7.9
1976.....	15,300	.575	5.85	.815	7.9
1977.....	16,500	.575	5.85	.815	7.9
1978.....	17,700	.775	6.05	1.09	8.10
1979.....	22,900	.75	6.13	1.04	8.10
1980.....	25,900	.56	6.13	.7775	8.10
1981.....	29,700	.65	6.65	.975	9.30
1982.....	32,400	.825	6.70	1.2375	9.35
1983.....	35,700	.625	6.70	.9375	9.35
Future schedule:					
1984.....	37,500	.500	7.00	1.000	14.00
1985.....	<sup>2</sup> 39,300	.500	7.05	1.000	14.10
1986.....	40,800	.500	7.15	1.000	14.30
1987.....	42,900	.500	7.15	1.000	14.30
1988.....	45,300	.530	7.51	1.060	15.02
1989.....	48,000	.530	7.51	1.060	15.02
1990.....	50,700	.600	7.65	1.200	15.30
2000.....	87,000	.710	7.65	1.420	15.30

<sup>1</sup> Beginning in 1975, automatic increases, except 1978-81.

<sup>2</sup> Projections of taxable earnings base based on the intermediate II-B assumptions in the 1983 OASDI Trustees' Report. The actual taxable earnings base for calendar year 1984 and later will depend upon how much average wages rise in the economy from one year to the next.

TABLE 33.—ESTIMATED OPERATIONS OF THE OASI, DI, AND HI TRUST FUNDS UNDER PRESENT LAW BASED ON 1983 TRUSTEES' REPORT INTERMEDIATE (II-B) ASSUMPTIONS, CALENDAR YEARS 1982-92

[Amounts in billions]

Calendar year	Income			Outgo			Interfund borrowing transfers <sup>1</sup>						
	OASI	DI	OASDI	HI	Total	OASI	DI	OASDI	HI	Total	OASI	DI	HI
1982	\$125.2	\$22.7	\$147.9	\$38.0	\$185.9	\$142.1	\$18.0	\$160.1	\$36.1	\$196.3	\$17.5	-\$5.1	-\$12.4
1983	151.4	20.9	172.2	44.7	216.9	151.6	17.9	169.5	41.2	210.7	.....	.....	.....
1984	163.9	17.1	180.9	45.6	226.5	162.3	18.0	180.3	46.6	226.8	-.5	.....	.....
1985	180.4	18.3	198.7	51.3	250.0	175.2	18.6	193.8	52.3	246.1	.....	.....	.....
1986	194.9	19.6	214.5	58.4	273.0	190.2	19.6	209.9	58.0	267.9	-1.1	.....	1.1
1987	210.2	21.0	231.2	62.5	293.7	204.6	20.6	225.2	64.1	289.2	-2.4	.....	2.4
1988	239.7	23.8	263.4	66.0	329.5	219.2	21.7	240.8	71.0	311.8	-8.4	.....	8.4
1989	259.5	25.5	285.1	70.0	355.0	233.6	22.9	256.5	78.4	334.8	-5.1	5.1	.....
1990 <sup>4</sup>	283.1	30.7	313.8	73.9	387.7	248.4	24.3	272.7	86.6	359.3	.....	.....	.....
1991	305.2	33.4	338.6	77.8	416.4	263.9	25.9	289.8	95.1	384.9	.....	.....	.....
1992	329.5	36.1	365.6	81.8	447.4	280.0	27.7	307.7	104.5	412.1	.....	.....	.....



	Net increase in funds					Funds at end of year					Assets at beginning of year as a percentage of outgo during year <sup>2</sup>				
	OASI	DI	OASDI	HI	Total	OASI	DI	OASDI	HI	Total	OASI	DI	OASDI	HI	Total
1982	\$0.6	-\$0.4	\$0.2	-\$10.6	-\$10.3	\$22.1	\$2.7	\$24.8	\$8.2	\$32.2	15	17	15	52	22
1983	-.3	3.0	2.7	3.5	6.3	21.8	5.7	27.5	11.7	39.2	15	15	15	20	16
1984	1.0	-.9	.1	-.5	-.4	22.8	4.8	27.6	11.2	38.9	20	38	22	25	23
1985	5.2	-.4	4.9	-1.0	3.9	28.1	4.4	32.5	10.2	42.7	20	32	21	21	21
1986	3.6	( <sup>3</sup> )	3.6	1.5	5.1	31.7	4.4	36.1	11.8	47.9	22	29	23	18	22
1987	3.2	.4	3.6	.8	4.5	34.9	4.8	39.7	12.6	52.3	23	28	23	18	22
1988	12.1	2.1	14.2	3.5	17.7	46.9	6.9	53.9	16.1	70.0	23	30	24	18	23
1989	20.9	7.7	28.6	-8.4	20.2	67.8	14.6	82.4	7.8	90.2	28	38	29	21	27
1990 <sup>4</sup>	34.8	6.3	41.1	-12.6	28.5	102.6	21.0	123.5	-4.9	118.7	35	69	38	9	31
1991	41.4	7.4	48.8	-17.3	31.5	143.9	28.4	172.3	-22.2	150.1	47	89	51	-5	37
1992	49.5	8.4	57.9	-22.7	35.2	193.5	36.8	230.2	-44.9	185.4	59	111	64	-21	42

<sup>1</sup> Positive figures represent amounts borrowed by the trust fund or recoveries of prior loans to other trust funds; negative figures represent amounts loaned by the trust fund or repayments of prior loans from other trust funds.  
<sup>2</sup> Assets at beginning of year are defined for the OASI and DI trust funds as assets at end of prior year plus the respective OASI and DI advance tax transfers (under P.L. 98-21, payroll tax income expected to be collected each month is credited to the trust funds on the first day of the month) for January.

<sup>3</sup> Between 0 and -\$50 million.

<sup>4</sup> The estimated operations for HI and OASDI and HI combined in 1990 and later are theoretical because the HI trust fund would be depleted.

Note.—These estimates do not include the potential costs of the Administration's June 1983 DI initiatives.

Source: Office of the Actuary, SSA, June 24, 1983.

TABLE 34.—ESTIMATED OPERATIONS OF THE OASI, DI, AND HI TRUST FUNDS BASED ON 1983 TRUSTEES' REPORT ALTERNATIVE III ASSUMPTIONS, CALENDAR YEARS 1982-92

[Amounts in billions]

Calendar year	Income			Outgo			Interfund borrowing transfers <sup>1</sup>								
	OASI	DI	OASDI	HI	Total	OASI	DI	OASDI	HI	Total	OASI	DI	OASDI	HI	Total
1982	\$125.2	\$22.7	\$147.9	\$38.0	\$185.9	\$142.1	\$18.0	\$160.1	\$36.1	\$196.3	\$17.5	—\$5.1	—	—\$12.4	
1983	150.3	20.7	171.0	44.4	215.4	151.7	17.9	169.6	41.2	210.8					
1984	159.6	16.7	176.3	44.5	220.8	162.5	18.0	180.5	46.8	227.4					
1985	177.5	18.0	195.5	50.5	246.0	174.5	18.6	193.2	54.1	247.2					
1986	195.2	19.6	214.8	58.2	273.0	187.3	19.5	206.8	61.9	268.7					
1987	213.5	21.3	234.8	62.6	297.5	206.3	21.1	227.4	70.5	297.9	—12.4			12.4	
1988	246.5	24.4	270.9	66.5	337.4	224.4	22.7	247.0	80.4	327.4					
1989	269.5	26.4	295.9	70.2	366.2	242.6	24.4	267.0	91.2	358.1	—5.1			5.1	
1990	296.3	32.0	328.3	73.7	402.0	261.2	26.4	287.6	103.3	390.9					
1991	321.4	35.0	356.4	76.7	433.1	295.3	29.4	324.6	116.3	441.0					
1992	347.2	37.9	385.1	79.5	464.6	316.2	31.8	348.0	130.7	478.7					

	Net increase in funds			Funds at end of year			Assets at beginning of year as a percentage of outgo during year <sup>2</sup>								
	OASI	DI	OASDI	HI	Total	OASI	DI	OASDI	HI	Total	OASI	DI	OASDI	HI	Total
1982	\$0.6	—\$0.4	\$0.2	—\$10.6	—\$10.3	\$22.1	\$2.7	\$24.8	\$8.2	\$32.9	15	17	15	52	22
1983	—1.4	2.8	1.4	3.2	4.6	20.6	5.5	26.2	11.4	37.6	15	15	15	20	16
1984	—2.9	—1.4	—4.3	—2.3	—6.6	17.7	4.2	21.9	9.1	31.0	19	37	21	24	22
1985	3.0	—7	2.3	—3.6	—1.3	20.7	3.5	24.2	5.5	29.7	17	29	18	17	18
1986	7.9	.1	8.0	—3.7	4.3	28.6	3.6	32.2	1.8	34.0	18	25	19	9	17
1987	—5.2	.2	—5.0	4.5	—5	23.4	3.8	27.2	6.3	33.6	21	24	21	3	17

	Net increase in funds				Funds at end of year				Assets at beginning of year as a percentage of outgo during year <sup>2</sup>						
	OASI	DI	OASDI	HI	Total	OASI	DI	OASDI	HI	Total	OASI	DI	OASDI	HI	Total
	1988	22.2	1.7	23.9	-13.9	10.0	45.5	5.5	51.1	-7.5	43.5	18	24	19	8
1989	21.9	7.1	29.0	-20.9	8.0	67.4	12.6	80.0	-28.5	51.6	26	30	27	-8	18
1990 <sup>3</sup>	35.2	5.6	40.7	-29.6	11.1	102.6	18.2	120.8	-58.1	62.7	34	56	36	-28	19
1991	26.2	5.6	31.8	-39.7	-7.9	128.7	23.8	152.6	-97.7	54.8	42	70	45	-50	20
1992	31.0	6.1	37.1	-51.2	-14.0	159.7	30.0	189.7	-148.9	40.8	48	83	51	-75	17

<sup>1</sup> Positive figures represent amounts borrowed by the trust fund or recoveries or prior loans to other trust funds; negative figures represent amounts loaned by the trust fund or repayments of prior loans from other trust funds.

<sup>2</sup> Assets at beginning of year are defined for the OASI and DI trust funds as assets at end of prior year plus the respective OASI and DI advance tax transfers (under P.L. 98-21, payroll tax income expected to be collected during each month is credited to the trust funds on the first day of the month) for January.

<sup>3</sup> The estimated operations for HI and for OASDI and HI combined in 1988 and later are theoretical because the HI trust fund would be depleted in that year under this set of assumptions.

Note.—These estimates do not include the potential costs of the Administration's June 1983 DI initiatives.

Source: Office of the Actuary, SSA, June 24, 1983.

TABLE 35.—LONG-RANGE OASDHI COST AND INCOME PROJECTIONS: 1983 INTERMEDIATE  
(II-B) ASSUMPTIONS

[As percent of taxable payroll]

Calendar year	Cost rate				Total income rate	Balance <sup>1</sup>
	OASI	DI	HI	Total		
<b>25-year averages:</b>						
1983-2007 .....	9.61	1.06	4.02	14.69	15.37	0.68
2008-2032 .....	11.14	1.49	7.08	19.71	15.85	-3.86
2033-2057 .....	13.65	1.58	9.29	24.52	16.05	-8.47
<b>75-year average:</b>						
1983-2057 .....	11.46	1.38	<sup>2</sup> 6.79	19.64	15.76	-3.88

<sup>1</sup> The balance is the total income rate minus the OASDHI cost rate. Positive balances are surpluses, and negative balances are deficits.

<sup>2</sup> Differs from the corresponding figure in the 1983 HI Trustees' Report as a result of an adjustment to treat the 1983 lump-sum transfer for deemed military service wage credits on a consistent basis with the OASDI estimates.

Source: 1983 OASDI and HI Trustees' Report.

Note: In terms of 1983 payroll, 1 percent of payroll is equivalent to about \$15 billion annually.

TABLE 36.—LONG-RANGE OASDI TRUST FUND RESERVE RATIOS: 1983 INTERMEDIATE (II-B) ASSUMPTIONS

[Start-of-year assets as percent of annual outgo]

Calendar year	OASI	DI	OASDI
1983.....	15	15	15
1984.....	20	38	22
1985.....	20	32	21
1986.....	22	29	23
1987.....	23	28	23
1988.....	23	30	24
1989.....	28	38	29
1990.....	35	69	38
1991.....	47	89	51
1992.....	59	111	64
1993.....	75	136	80
1994.....	91	161	98
1995.....	110	186	117
1996.....	130	213	137
1997.....	152	240	160
1998.....	175	262	183
1999.....	200	280	208
2000.....	227	297	234
2001.....	253	329	261
2002.....	281	357	289
2003.....	309	379	317
2004.....	338	396	345
2005.....	367	409	372
2006.....	397	419	399
2007.....	425	425	425
2010.....	501	431	491
2015.....	563	421	544
2020.....	556	405	538
2025.....	507	390	494
2030.....	442	393	437
2035.....	372	388	374
2040.....	308	369	314
2045.....	245	339	255
2050.....	178	311	192
2055.....	106	284	125
2060.....	31	260	54

TABLE 37.—LONG-RANGE DI FINANCIAL FORECASTS OVER THE YEARS

[Intermediate assumptions]

Year of trustees' report	Long-range cost (in percent of taxable payroll)
1957 .....	0.42
1960 .....	.35
1965 .....	.63
1970 .....	1.10
1975 .....	2.97
1980 .....	1.50
1983 .....	1.41

Source: Various Trustees' Reports.

---

---

**V. Supplemental Security Income for the Aged, Blind and Disabled**

---

---





TABLE 38.—SSI FEDERAL BENEFIT COSTS AND PROPORTION SPENT ON BLIND AND DISABLED, 1974-83

[Amounts in millions]

Calendar year	Total	Blind and disabled	Blind and disabled costs as percent of total costs
1974 .....	\$3,833	\$2,050	53
1975 .....	4,314	2,471	57
1976 .....	4,512	2,727	60
1977 .....	4,703	2,966	63
1978 .....	4,881	3,174	65
1979 .....	5,279	3,520	67
1980 .....	5,866	4,006	68
1981 .....	6,518	4,551	70
1982 .....	7,133	5,104	72
1983 <sup>1</sup> .....	7,410	5,400	73

<sup>1</sup> Estimates.

Source: Social Security Bulletin, Annual Statistical Supplement, 1981, with 1982 and 1983 figures supplied by the Office of Research and Statistics, SSA.

TABLE 39.—SSI RECIPIENTS: TOTAL NUMBER AND PROPORTION BLIND AND DISABLED, 1974-83 <sup>1</sup>

[In millions]

Calendar year	Total SSI recipients <sup>2</sup>	Number disabled	Number blind	Disabled and blind recipients as percent of total
1974 .....	3.996	1.636	0.075	43
1975 .....	4.314	1.933	.074	47
1976 .....	4.236	2.012	.076	49
1977 .....	4.238	2.109	.077	52
1978 .....	4.216	2.172	.077	53
1979 .....	4.150	2.201	.077	55
1980 .....	4.142	2.256	.078	56
1981 .....	4.019	2.262	.079	58
1982 .....	3.858	2.231	.077	60
1983 .....	3.856	2.255	.078	61

<sup>1</sup> Receiving Federally administered payments.

<sup>2</sup> As of December of each year 1974 through 1982. As of May for 1983.

Source: Social Security Bulletin, August 1983 and SSA's "Monthly Benefit Statistics," No. 6, July 1983.

TABLE 40.—SSI RECIPIENTS: TOTAL NUMBER AND PROPORTION BLIND AND DISABLED, BY STATE, JULY 1983

State	Total	Aged	Blind	Disabled	Blind and disabled as percent of total
Total <sup>1</sup> .....	3,881,739	1,525,403	78,706	2,277,630	61
Alabama .....	127,209	65,618	1,913	59,678	48
Alaska .....	3,078	1,123	54	1,901	64
Arizona .....	28,905	9,980	604	18,321	65
Arkansas .....	70,892	35,643	1,382	33,867	50
California .....	656,090	270,616	18,087	367,387	59
Colorado .....	28,163	10,344	403	17,416	63
Connecticut .....	23,487	6,391	455	16,641	73
Delaware .....	6,806	2,058	157	4,591	70
District of Columbia .....	14,766	3,922	210	10,634	73
Florida .....	169,410	77,363	2,867	89,180	54
Georgia .....	145,682	61,161	2,842	81,679	58
Hawaii .....	9,937	4,446	170	5,321	55
Idaho .....	7,402	2,156	123	5,123	71
Illinois .....	118,811	29,547	2,054	87,210	75
Indiana .....	40,261	11,734	1,178	27,349	71
Iowa .....	24,791	8,821	1,026	14,944	64
Kansas .....	19,256	6,070	320	12,866	68
Kentucky .....	91,761	35,471	2,056	54,234	61
Louisiana .....	122,565	52,524	2,069	67,972	57
Maine .....	20,425	8,053	302	12,070	61
Maryland .....	46,654	13,726	708	32,220	71
Massachusetts .....	108,184	53,591	4,939	49,654	50
Michigan .....	109,410	30,196	1,985	77,229	72
Minnesota .....	29,705	10,197	630	18,878	66
Mississippi .....	108,527	53,786	1,809	52,932	50
Missouri .....	76,931	31,161	1,251	44,519	59
Montana .....	6,522	1,775	131	4,616	73
Nebraska .....	12,857	4,150	221	8,486	68
Nevada .....	6,811	3,249	450	3,112	52
New Hampshire .....	5,223	1,646	109	3,468	68
New Jersey .....	83,638	28,634	1,146	53,858	66
New Mexico .....	24,245	9,081	479	14,685	63
New York .....	335,655	114,025	4,043	217,587	66
North Carolina .....	121,201	54,789	2,910	74,502	59
North Dakota .....	5,803	2,523	88	3,192	57
Ohio .....	114,407	27,667	2,346	84,394	76

TABLE 40.—SSI RECIPIENTS: TOTAL NUMBER AND PROPORTION BLIND AND DISABLED, BY STATE, JULY 1983—Continued

State	Total	Aged	Blind	Disabled	Blind and disabled as percent of total
Oklahoma .....	58,952	26,911	966	31,075	54
Oregon .....	22,407	6,449	503	15,455	71
Pennsylvania .....	153,289	46,683	3,056	103,550	70
Rhode Island.....	14,342	5,045	219	9,078	65
South Carolina.....	80,346	33,453	1,881	45,012	58
South Dakota .....	7,818	3,157	149	4,512	60
Tennessee.....	124,052	51,722	2,000	70,330	58
Texas.....	242,142	124,996	4,303	112,843	48
Utah.....	7,644	1,967	189	5,488	74
Vermont .....	8,657	3,065	123	5,469	65
Virginia.....	78,446	30,161	1,446	46,839	62
Washington .....	43,185	12,295	642	30,248	72
West Virginia.....	39,141	11,012	650	27,479	72
Wisconsin.....	62,467	24,289	1,001	37,177	61
Wyoming.....	1,747	623	43	1,081	64
Other:					
Northern Mariana Islands.....	613	334	18	261	46

<sup>1</sup> Includes persons with Federal SSI payments and/or federally administered State supplementation.

Source: Social Security Administration, Office of Research and Statistics, August 1983.

TABLE 41.—NUMBER OF SSI RECIPIENTS AND AVERAGE MONTHLY PAYMENT, JULY 1983

Type of payment	Total	Aged	Blind	Disabled
Number of persons:				
Total .....	3,881,739	1,525,403	<sup>1</sup> 78,706	<sup>2</sup> 2,227,630
Federal SSI payments <sup>3</sup> .....	3,568,790	1,348,095	70,894	2,149,801
State supplementation <sup>4</sup> ....	1,555,720	586,148	36,237	933,335
Average monthly amount:				
Total .....	\$210.79	\$159.38	\$254.47	\$243.71
Federal SSI payments .....	\$187.98	\$139.74	\$215.08	\$217.34
State supplementation .....	\$94.73	\$93.38	\$131.90	\$94.13

<sup>1</sup> Includes approximately 23,000 persons aged 65 and over.

<sup>2</sup> Includes approximately 447,000 persons aged 65 and over.

<sup>3</sup> Includes persons with Federal SSI payments only, and Federal SSI and federally administered State supplementation. Data partly estimated.

<sup>4</sup> Includes persons with federally administered State supplementation only, and Federal SSI and federally administered State supplementation. Data partly estimated.

Source: Social Security Administration, Office of Research and Statistics, August 1983.

TABLE 42.—NUMBER OF SSI RECIPIENTS AND AVERAGE MONTHLY PAYMENT, BY REASON FOR ELIGIBILITY AND TYPE OF PAYMENT, DECEMBER 1982

Type of payment	All persons						Adults						Blind and disabled children		
	Aged		Blind		Disabled		Individual		Couple		Individual			Couple	
	Individual	Couple	Individual	Couple	Individual	Couple	Individual	Couple	Individual	Couple	Individual	Couple		Individual	Couple
	Number														
Total.....	3,857,590	1,273,368	137,726	62,814	3,871	1,841,118	65,963	229,151							
Federal SSI payments.....	3,473,301	1,107,682	111,372	55,506	3,189	1,715,769	54,566	227,941							
Federal SSI payments only.....	2,307,185	777,027	86,697	33,149	2,189	1,065,590	39,265	150,935							
Federal SSI and State supplementation.....	1,166,116	330,655	24,675	22,357	1,000	650,179	15,301	77,006							
State supplementation.....	1,550,405	496,341	51,029	29,665	1,682	775,528	26,698	78,216							
State supplementation only.....	384,289	165,686	26,354	7,308	682	125,349	11,397	1,210							
									Average monthly amount						
Total.....	\$195.83	\$151.01	\$239.65	\$243.18	\$353.87	\$231.82	\$288.73	\$263.22							
Federal SSI payments.....	174.72	133.17	196.48	203.90	270.26	204.55	237.95	241.96							
State supplementation.....	95.81	90.23	218.00	133.40	302.00	97.80	227.04	63.13							

<sup>1</sup> Recipients of Federal SSI payments and/or federally administered State supplements.

Source: Social Security Administration, Office of Research and Statistics, August 1983.

TABLE 43.—NUMBER AND DISTRIBUTION OF SSI RECIPIENTS, BY MONTHLY PAYMENT AMOUNT, DECEMBER 1982

Monthly amount	Individuals <sup>1</sup>			Couples			
	Aged	Blind	Disabled	Blind and disabled children	Aged	Blind	Disabled
Total number.....	1,107,682	55,506	1,715,769	227,941	111,372	3,189	54,566
Total percent .....	100.0	100.0	100.0	100.0	100.0	100.0	100.0
Less than \$10 .....	3.7	1.7	1.8	.3	3.1	1.4	2.2
\$10 to \$19 .....	4.4	2.1	2.4	.7	3.4	1.4	2.4
\$20 to \$39 .....	14.5	8.3	10.1	11.2	6.9	3.5	5.1
\$40 to \$59 .....	7.8	3.6	3.8	.8	6.9	4.4	5.3
\$60 to \$79 .....	6.6	3.3	3.5	.8	6.6	3.6	5.3
\$80 to \$99 .....	6.1	3.3	3.6	.9	6.6	4.4	5.5
\$100 to \$119 .....	5.5	3.2	3.2	1.1	5.7	3.4	5.0
\$120 to \$139 .....	17.4	7.3	5.6	1.4	4.5	4.1	4.7
\$140 to \$179 .....	4.9	4.7	4.7	3.1	9.6	8.6	9.4
\$180 to \$219 .....	5.0	9.3	8.3	9.3	16.2	10.0	9.4
\$220 to \$259 .....	1.2	3.7	3.2	7.2	2.2	4.4	5.2
\$260 to \$279 .....	.7	1.8	1.8	3.3	4.3	5.8	4.7
\$280 and over <sup>2,3</sup> .....	22.1	47.8	48.0	59.9	24.1	45.0	35.8

<sup>1</sup> Excludes couples.

<sup>2</sup> Individuals living in their own household with no countable income were eligible for a Federal SSI payment of \$284.30.

<sup>3</sup> Couples living in their own household with no countable income were eligible for a Federal SSI payment of \$426.40.

Source: Social Security Administration, Office of Research and Statistics, August 1983.

TABLE 44.—AGE DISTRIBUTION OF ADULT SSI RECIPIENTS, DECEMBER 1982 <sup>1</sup>

Age	Total	Reason for eligibility		
		Aged	Blind	Disabled
Total number .....	3,628,439	1,548,741	70,158	2,009,540
Total percent .....	100.0	100.0	100.0	100.0
18 to 21 .....	2.3		4.5	4.0
22 to 29 .....	7.5		13.9	13.0
30 to 39 .....	7.2		12.3	12.6
40 to 49 .....	6.9		10.1	12.0
50 to 59 .....	12.2		15.7	21.5
60 to 64 .....	8.5		10.2	14.9
65 to 69 .....	12.8	12.5	9.6	13.1
70 to 74 .....	14.2	22.4	8.4	8.1
75 to 79 .....	12.1	27.6	5.1	.5
80 and over .....	16.3	37.5	10.2	.1

<sup>1</sup> Recipients of Federal SSI payments and/or federally administered State supplements.

Source: Social Security Administration, Office of Research and Statistics, August 1983.

TABLE 45.—AGE DISTRIBUTION OF SSI CHILD RECIPIENTS, BY REASON FOR ELIGIBILITY,  
DECEMBER 1982 <sup>1</sup>

Age	Total	Blind	Disabled
Total number .....	229,151	7,198	221,953
Total percent .....	100.0	100.0	100.0
Under 5.....	12.3	15.2	12.2
5 to 9.....	21.5	21.7	21.5
10 to 14.....	28.8	27.3	28.9
15 to 17.....	20.8	18.7	20.9
18 and over.....	16.6	17.1	16.5

<sup>1</sup> Recipients of Federal SSI payments and/or federally administered State supplements.

Source: Social Security Administration, Office of Research and Statistics, August 1983.



TABLE 46.—NUMBER AND DISTRIBUTION OF NEW AWARDS TO BLIND AND DISABLED SSI RECIPIENTS, BY DIAGNOSTIC GROUP, 1977 <sup>1</sup>

Diagnostic group	Number			Percentage distribution		
	Total <sup>2</sup>	Blind and disabled		Total	Blind and disabled	
		Adults	Children		Adults	Children
Total.....	335,783	288,904	46,879	100.0	100.0	100.0
Infective and parasitic diseases .....	4,190	3,871	319	1.2	1.3	.7
Neoplasms.....	19,650	18,605	1,045	5.9	6.4	2.2
Endocrine, nutritional, and metabolic diseases .....	13,476	12,712	764	4.0	4.4	1.6
Mental disorders.....	117,609	89,936	27,673	35.0	31.1	59.0
Mental retardation .....	63,981	38,713	25,268	19.1	13.4	53.9
Diseases of the—						
Nervous system and sense organs.....	37,951	29,035	8,916	11.3	10.1	19.0
Eye.....	8,738	7,800	938	2.6	2.7	2.0
Circulatory system .....	58,922	58,561	361	17.5	20.3	.8
Respiratory system .....	13,651	13,318	333	4.1	4.6	.7
Digestive system.....	6,021	5,894	127	1.8	2.0	.3
Genitourinary system .....	2,794	2,513	281	.8	.9	.6
Musculoskeletal system and connective tissue.....	32,834	32,126	708	9.8	11.1	1.5
Congenital anomalies.....	8,168	4,160	4,008	2.4	1.4	8.5
Accidents, poisonings, and violence (nature of injury) .....	11,774	11,094	680	3.5	3.8	1.4
Other.....	8,742	7,078	1,644	2.6	2.4	3.6

<sup>1</sup> Recipients of Federal SSI payments and/or federally administered State supplements.

<sup>2</sup> Excludes those previously entitled to OASDI benefits. Data do not add to total because of rounding of estimates to integral values.

Source: Social Security Bulletin, Annual Statistical Supplement, 1981.

TABLE 47.—NUMBER OF DISABLED SSI RECIPIENTS AND AVERAGE MONTHLY PAYMENT, BY STATE, DECEMBER 1982

State	Total		Federal SSI		State supplementation	
	Number <sup>1</sup>	Average monthly amount	Number	Average monthly amount	Number	Average monthly amount
Total.....	2,231,493	\$229.04	2,075,232	\$203.89	917,741	\$95.87
Alabama.....	57,999		57,999	196.48		
Alaska.....	1,813		1,813	207.72		
Arizona.....	17,754		17,754	227.17		
Arkansas.....	33,156	180.44	33,153	180.39	101	20.82
California.....	363,240	310.45	261,583	213.39	352,028	161.77
Colorado.....	17,111		17,111	194.65		
Connecticut.....	16,150		16,150	209.60		
Delaware.....	4,430	206.25	4,392	202.01	258	102.64
District of Columbia.....	10,361	250.62	10,154	230.64	10,151	25.10
Florida.....	87,515	207.19	87,515	207.19	2	( <sup>2</sup> )
Georgia.....	80,337	192.81	80,321	192.82	119	16.61
Hawaii.....	5,157	238.99	4,907	205.74	4,824	46.21
Idaho.....	4,952		4,952	191.10		
Illinois.....	85,112		85,112	205.03		
Indiana.....	26,448		26,448	194.44		
Iowa.....	14,233	180.66	14,144	178.07	552	95.51
Kansas.....	12,343	176.62	12,338	176.36	131	31.12
Kentucky.....	52,076		52,076	210.97		
Louisiana.....	67,362	201.49	67,355	201.50	52	23.71
Maine.....	11,666	188.79	10,290	189.99	11,042	22.40
Maryland.....	31,395	215.21	31,383	215.01	279	32.36
Massachusetts.....	48,730	255.05	40,409	207.55	45,708	88.42
Michigan.....	75,110	242.70	69,153	209.88	70,828	52.46
Minnesota.....	18,293		18,293	164.90		
Mississippi.....	51,646	201.30	51,638	201.29	121	15.92
Missouri.....	43,387		43,387	202.54		
Montana.....	4,451	203.66	4,362	193.16	687	93.09
Nebraska.....	8,289		8,289	186.20		
Nevada.....	2,920	210.68	2,911	211.33	43	
New Hampshire.....	3,314		3,314	201.76		
New Jersey.....	52,531	238.54	49,004	211.15	49,298	44.28
New Mexico.....	14,410		14,410	207.66		
New York.....	216,077	255.39	197,883	218.68	204,338	58.29
North Carolina.....	73,279		73,279	197.88		
North Dakota.....	3,089		3,089	183.47		

TABLE 47.—NUMBER OF DISABLED SSI RECIPIENTS AND AVERAGE MONTHLY PAYMENT, BY STATE, DECEMBER 1982—Continued

State	Total		Federal SSI		State supplementation	
	Number <sup>1</sup>	Average monthly amount	Number	Average monthly amount	Number	Average monthly amount
Ohio .....	82,243	208.56	82,226	208.53	224	25.94
Oklahoma .....	30,846	.....	30,846	184.38	.....	.....
Oregon .....	14,937	.....	14,937	201.27	.....	.....
Pennsylvania .....	101,166	230.77	95,329	210.64	95,661	34.14
Rhode Island.....	8,927	213.10	7,883	189.04	8,110	50.81
South Carolina.....	44,075	.....	44,075	194.58	.....	.....
South Dakota .....	4,240	183.26	4,239	182.87	60	31.07
Tennessee.....	68,745	200.78	68,745	200.77	31	23.29
Texas.....	110,553	.....	110,553	186.71	.....	.....
Utah.....	5,308	.....	5,308	185.36	.....	.....
Vermont .....	5,296	227.00	4,691	190.24	4,968	62.36
Virginia.....	45,583	.....	45,583	196.73	.....	.....
Washington .....	29,258	225.32	27,349	204.49	26,611	37.58
West Virginia.....	26,957	.....	26,957	217.93	.....	.....
Wisconsin.....	35,938	236.91	28,856	180.58	31,505	104.85
Wyoming .....	1,018	.....	1,018	202.88	.....	.....
Unknown.....	13	.....	12	.....	9	.....
Other areas:						
Northern Mariana Islands.....	254	.....	254	248.26	.....	.....

<sup>1</sup> All persons with Federal SSI payments and/or federally administered State supplementation.

<sup>2</sup> Not computed for fewer than 5 persons.

Source: Social Security Administration, Office of Research and Statistics, August 1983.

TABLE 48.—NUMBER OF BLIND SSI RECIPIENTS AND AVERAGE MONTHLY PAYMENT, BY STATE, DECEMBER 1982

State	Total		Federal SSI		State supplementation	
	Number <sup>1</sup>	Average monthly amount	Number	Average monthly amount	Number	Average monthly amount
Total.....	77,356	\$241.59	68,584	\$202.67	35,584	\$134.58
Alabama.....	1,898		1,898	199.25		
Alaska.....	59		59	212.92		
Arizona.....	575		575	227.04		
Arkansas.....	1,401	192.43	1,401	192.29	18	11.28
California.....	17,710	324.96	11,746	195.09	17,273	200.51
Colorado.....	382		382	195.41		
Connecticut.....	425		425	205.49		
Delaware.....	155	181.55	143	182.34	44	46.98
District of Columbia.....	201	226.51	199	209.18	198	19.71
Florida.....	2,798	211.78	2,798	211.76	1	( <sup>2</sup> )
Georgia.....	2,857	200.81	2,857	200.73	10	23.00
Hawaii.....	164	234.38	161	207.86	157	31.67
Idaho.....	117		117	190.09		
Illinois.....	1,941		1,941	212.15		
Indiana.....	1,181		1,181	202.19		
Iowa.....	1,011	193.80	970	175.26	900	28.81
Kansas.....	315	190.30	315	189.56	6	39.00
Kentucky.....	2,012		2,012	230.96		
Louisiana.....	2,056	211.31	2,056	211.29	2	( <sup>2</sup> )
Maine.....	293	183.14	268	178.15	282	20.97
Maryland.....	677	221.57	677	220.34	21	39.67
Massachusetts.....	4,938	257.72	3,072	180.18	4,804	149.69
Michigan.....	1,913	243.14	1,827	220.18	1,859	33.82
Minnesota.....	627		627	176.64		
Mississippi.....	1,781	201.18	1,781	201.15	6	9.00
Missouri.....	1,247		1,247	187.32		
Montana.....	131	209.00	131	205.12	3	( <sup>2</sup> )
Nebraska.....	227		227	191.46		
Nevada.....	450	236.62	297	188.32	432	117.01
New Hampshire.....	109		109	192.40		
New Jersey.....	1,119	237.18	1,068	209.49	1,077	38.69
New Mexico.....	458		458	207.01		
New York.....	3,971	243.00	3,688	212.27	3,859	47.19
North Carolina.....	2,916		2,916	198.95		
North Dakota.....	79		79	209.71		

TABLE 48.—NUMBER OF BLIND SSI RECIPIENTS AND AVERAGE MONTHLY PAYMENT, BY STATE, DECEMBER 1982—Continued

State	Total		Federal SSI		State supplementation	
	Number <sup>1</sup>	Average monthly amount	Number	Average monthly amount	Number	Average monthly amount
Ohio .....	2,318	205.59	2,316	205.55	21	24.24
Oklahoma .....	956	.....	956	216.32	.....	.....
Oregon .....	498	.....	498	187.51	.....	.....
Pennsylvania .....	3,033	234.14	2,943	208.66	2,895	33.19
Rhode Island.....	209	221.74	191	190.88	197	50.18
South Carolina.....	1,861	.....	1,861	210.22	.....	.....
South Dakota .....	134	231.51	133	232.14	4	( <sup>2</sup> )
Tennessee.....	1,962	211.20	1,962	211.12	3	( <sup>2</sup> )
Texas.....	4,220	.....	4,220	201.27	.....	.....
Utah.....	165	.....	165	201.26	.....	.....
Vermont .....	119	234.72	112	198.77	115	49.30
Virginia.....	1,421	.....	1,421	206.17	.....	.....
Washington .....	604	227.33	565	203.60	555	40.14
West Virginia.....	633	.....	633	226.92	.....	.....
Wisconsin.....	972	250.35	843	181.91	842	106.87
Wyoming.....	40	.....	40	198.12	.....	.....
Unknown.....	.....	.....	.....	.....	.....	.....
Other areas:						
Northern Mariana Islands.....	17	.....	17	301.76	.....	.....

<sup>1</sup> All persons with Federal SSI payments and/or federally administered State supplementation.

<sup>2</sup> Not computed for fewer than 5 persons.

Source: Social Security Administration, Office of Research and Statistics, August 1983.



---

---

## **VI. Additional Charts**

---

---





Chart 1  
 DISABILITY INSURANCE PROGRAM  
 TOTAL COSTS

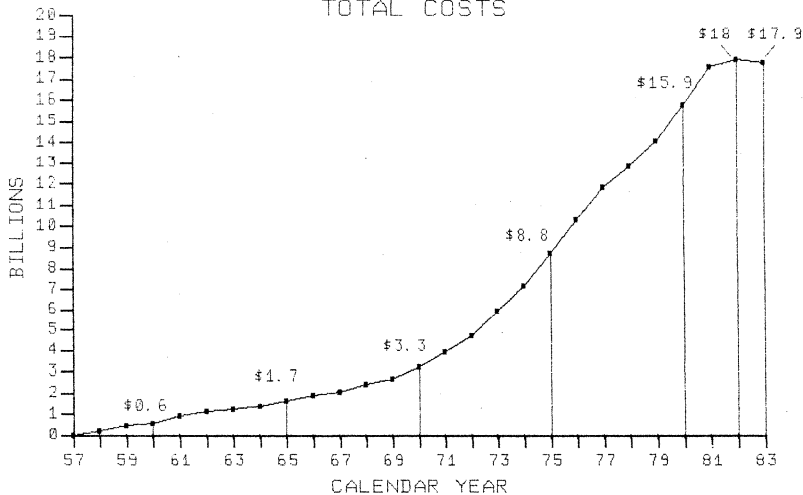


Chart 2  
 NUMBER OF NEW DI WORKER AWARDS  
 1970 - 1982

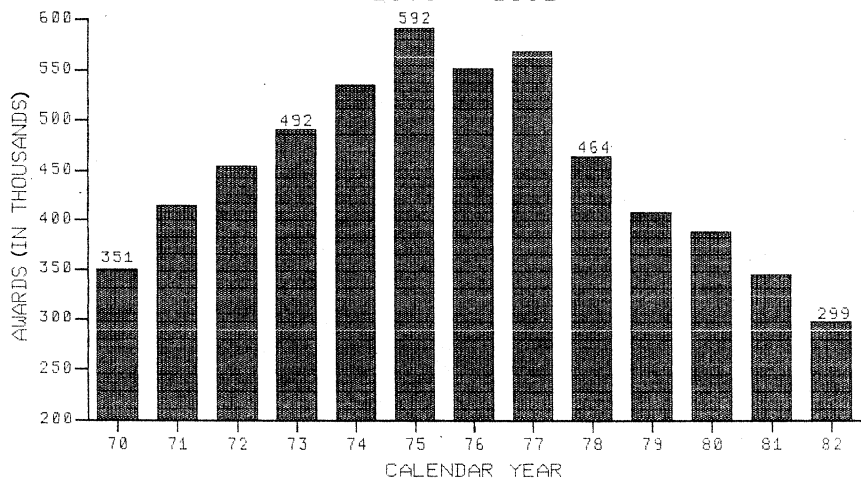
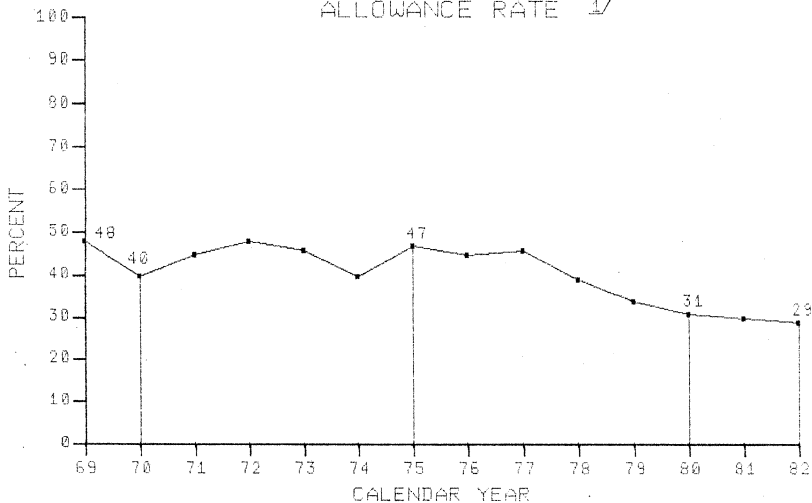


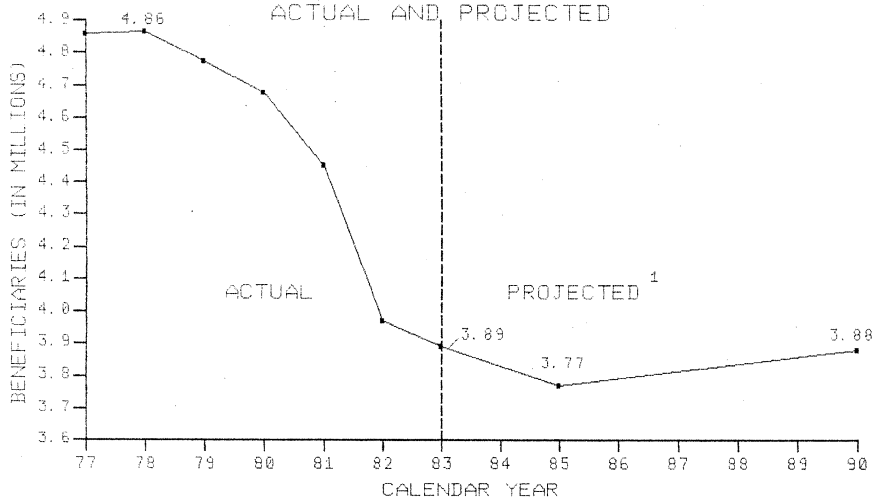
Chart 3

DISABILITY INSURANCE PROGRAM  
ALLOWANCE RATE <sup>1/</sup>

<sup>1/</sup>Awards divided by applications.

Chart 4

### DI BENEFICIARIES: ACTUAL AND PROJECTED



<sup>1</sup> 1983 OASDI Trustees Report, Intermediate II-B Assumptions.

Chart 5

### PROJECTED DI BENEFIT COSTS: 1981 - 1987

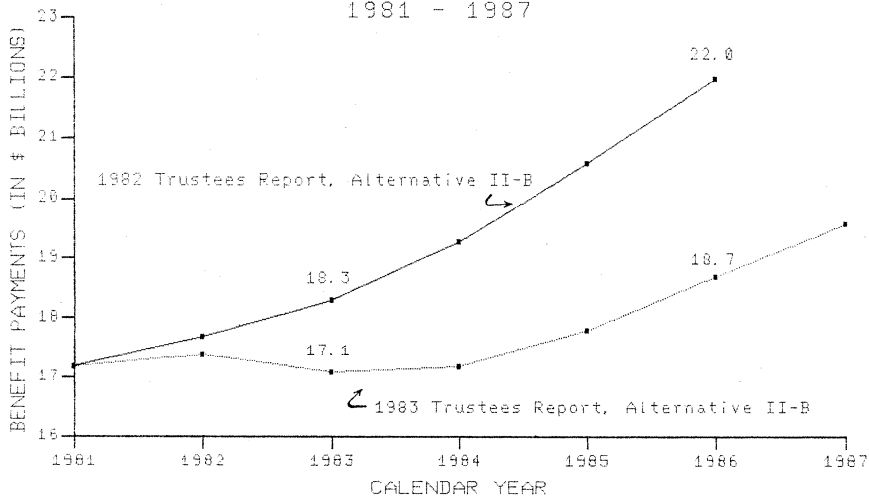


Chart 6

## RECENT CDI TERMINATION RATES

(State Agency Initial Decisions)

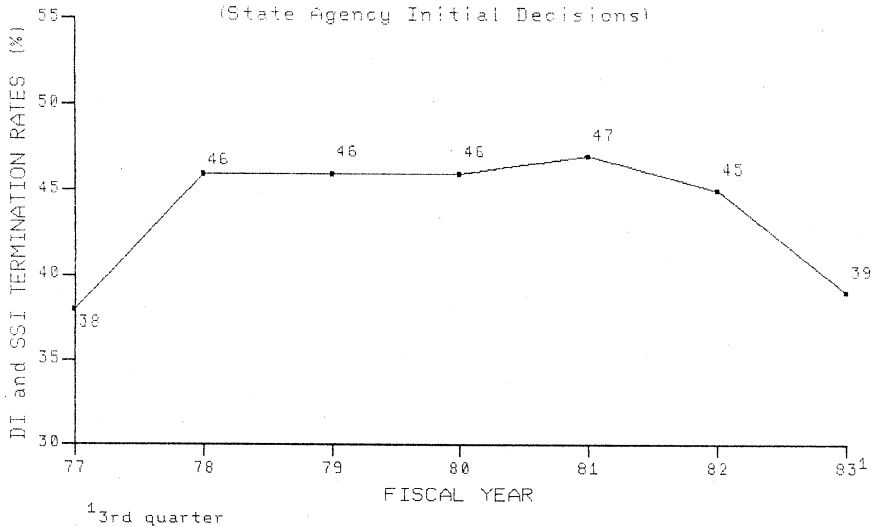


Chart 7

## NUMBER OF SSA ALJs

1973 - 1983

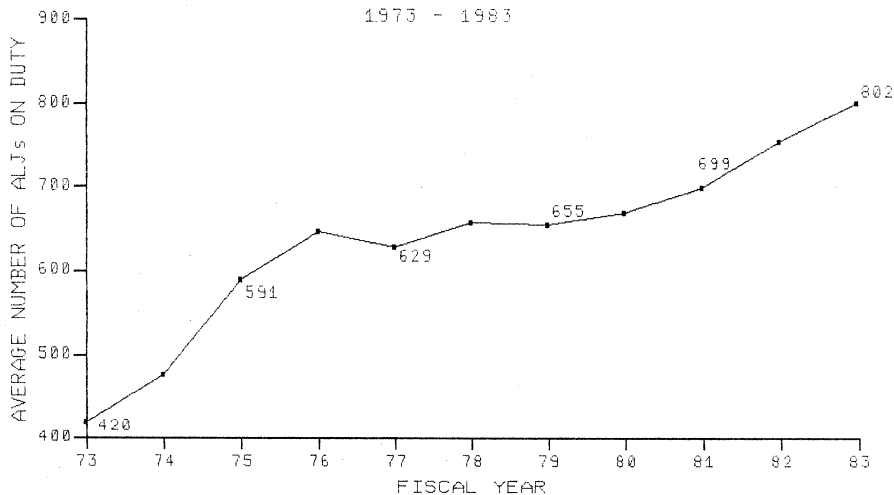


Chart 8

## HEARING DECISIONS PER ALJ

AVERAGE MONTHLY WORKLOAD

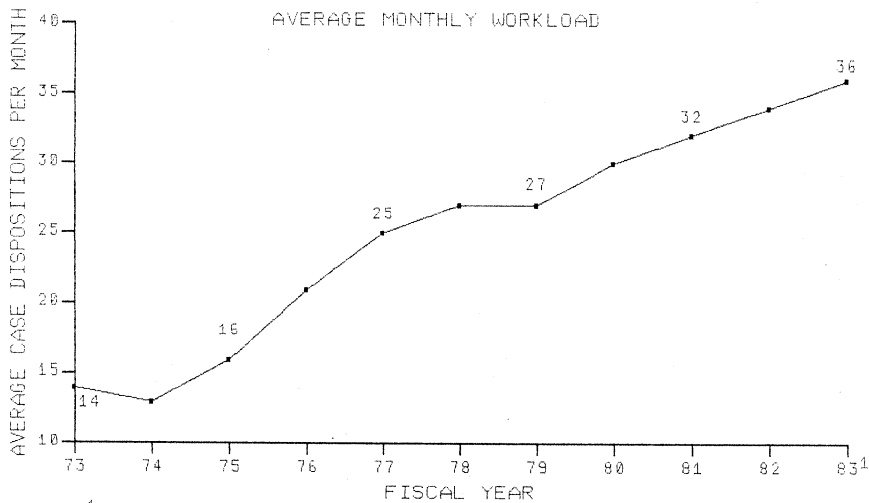
<sup>1</sup> estimated

Chart 9

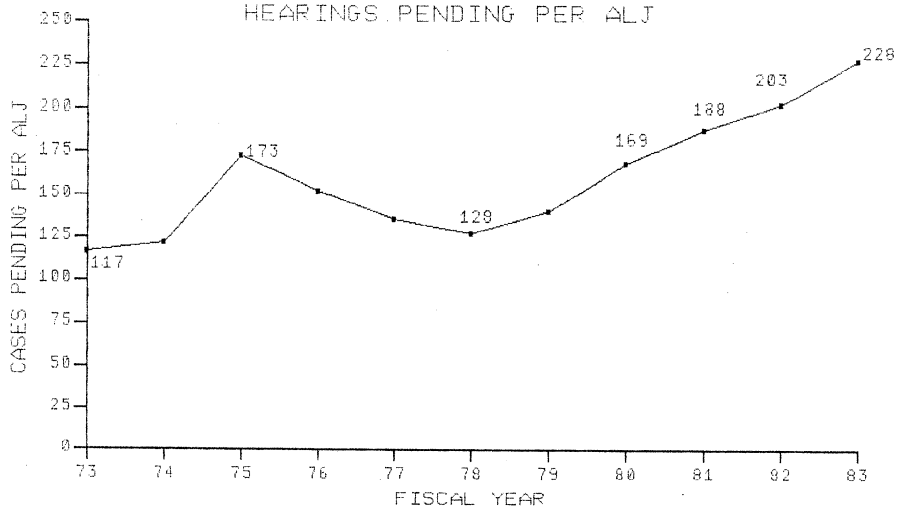
DISABILITY INSURANCE PROGRAM  
HEARINGS PENDING PER ALJ

CHART 10  
STAGES OF DI DECISION-MAKING

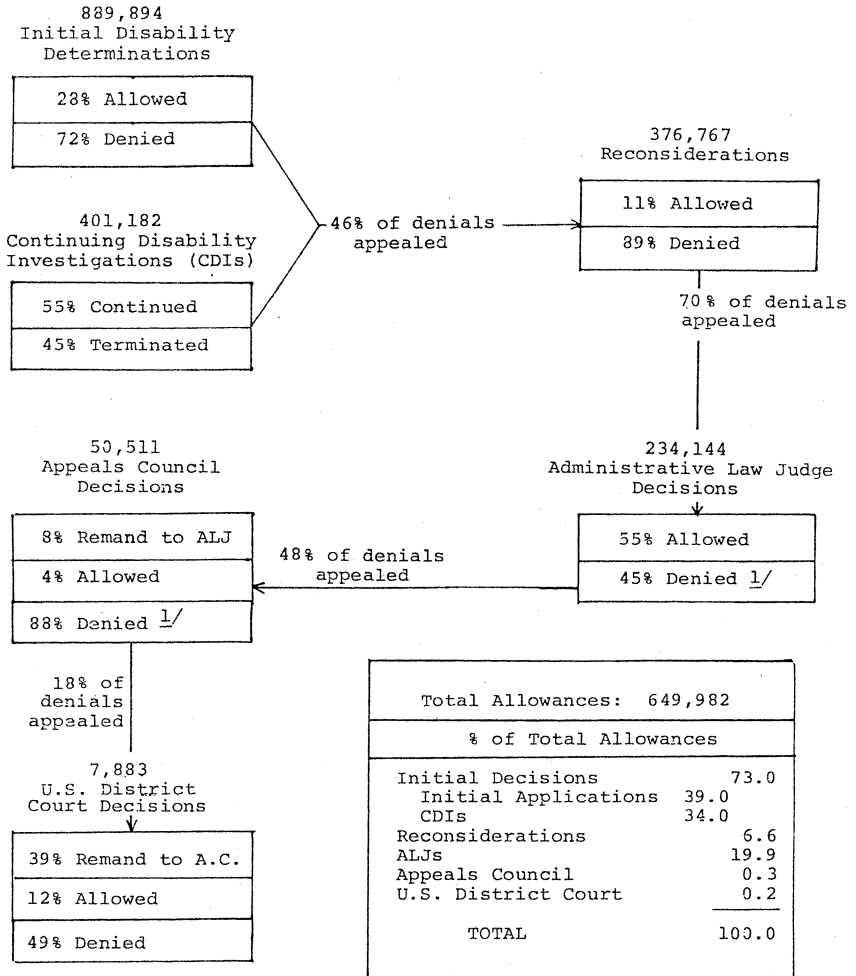
	<u>Administered by:</u>	<u>Time allowed to request next stage</u>	<u>Average time from request to decision<sup>1/</sup></u>
INITIAL CLAIM	SSA District Office	60 days	65 days
RECONSIDERATION	State Agency (DDS)*	60 days	50 days
HEARING	SSA's Administrative Law Judges	60 days	184 days <sup>2/</sup>
APPEAL	SSA's Appeals Council	60 days	80 days <sup>2/</sup>
FEDERAL COURT REVIEW	Federal Court System	--	N.A.

\*Disability Determination Service.

<sup>1/</sup> May 1983.

<sup>2/</sup> Estimate; includes appeals of both initial denials and CDI terminations.

CHART 11

DISABILITY DETERMINATIONS AND APPEALS,  
FISCAL YEAR 1982\*

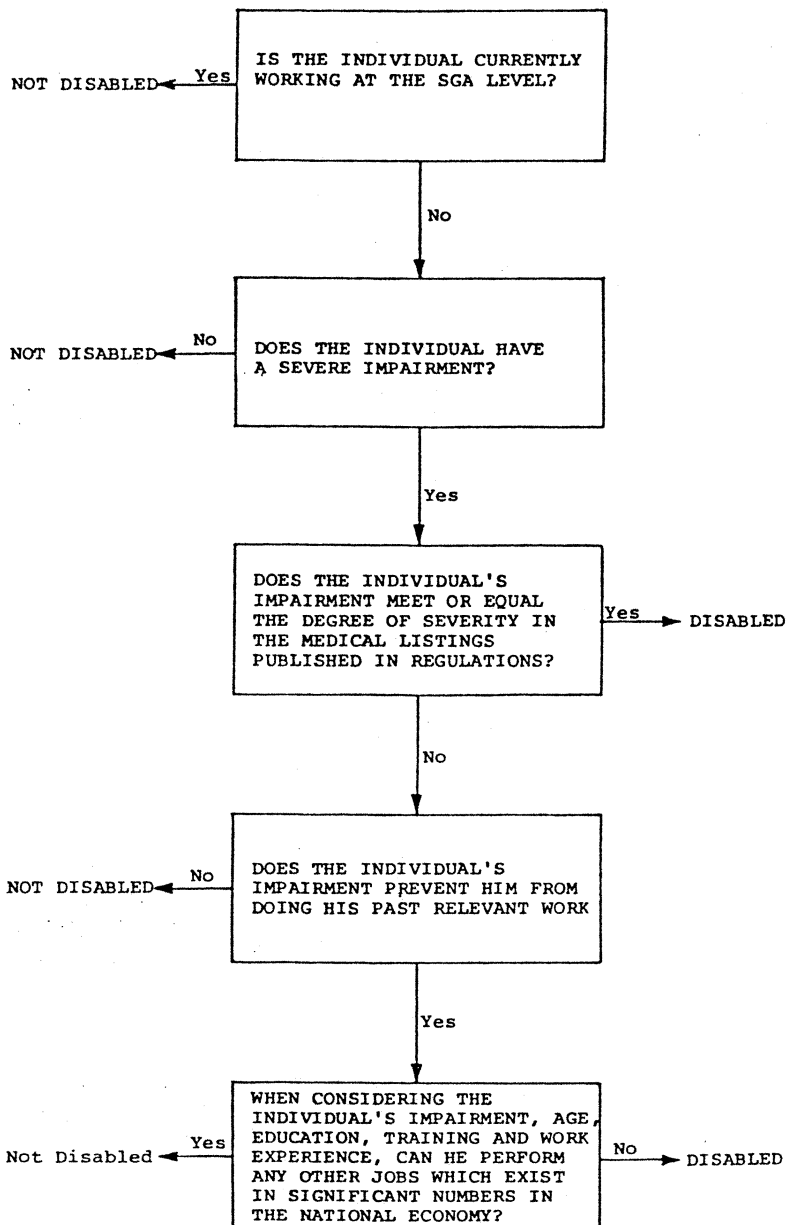
\*Includes concurrent DI/SSI cases.

1/ Includes dismissals.



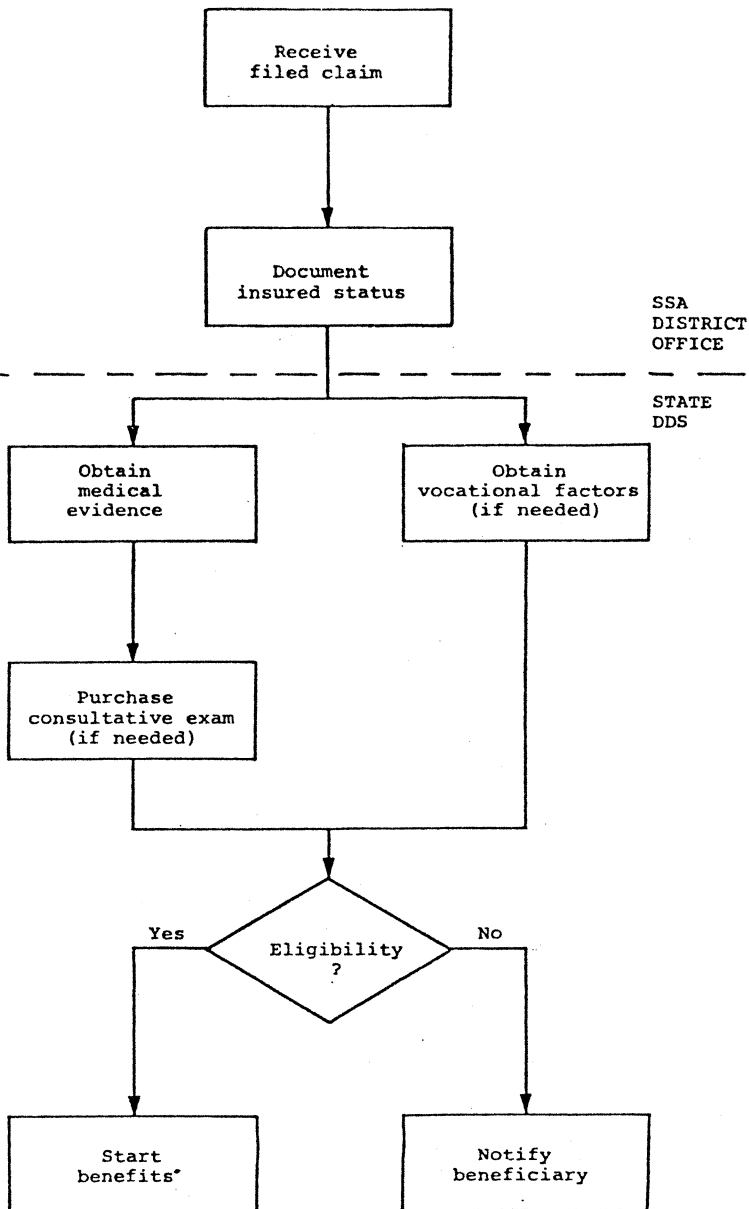
## CHART 12

THE DISABILITY DECISION:  
A SEQUENTIAL EVALUATION PROCESS



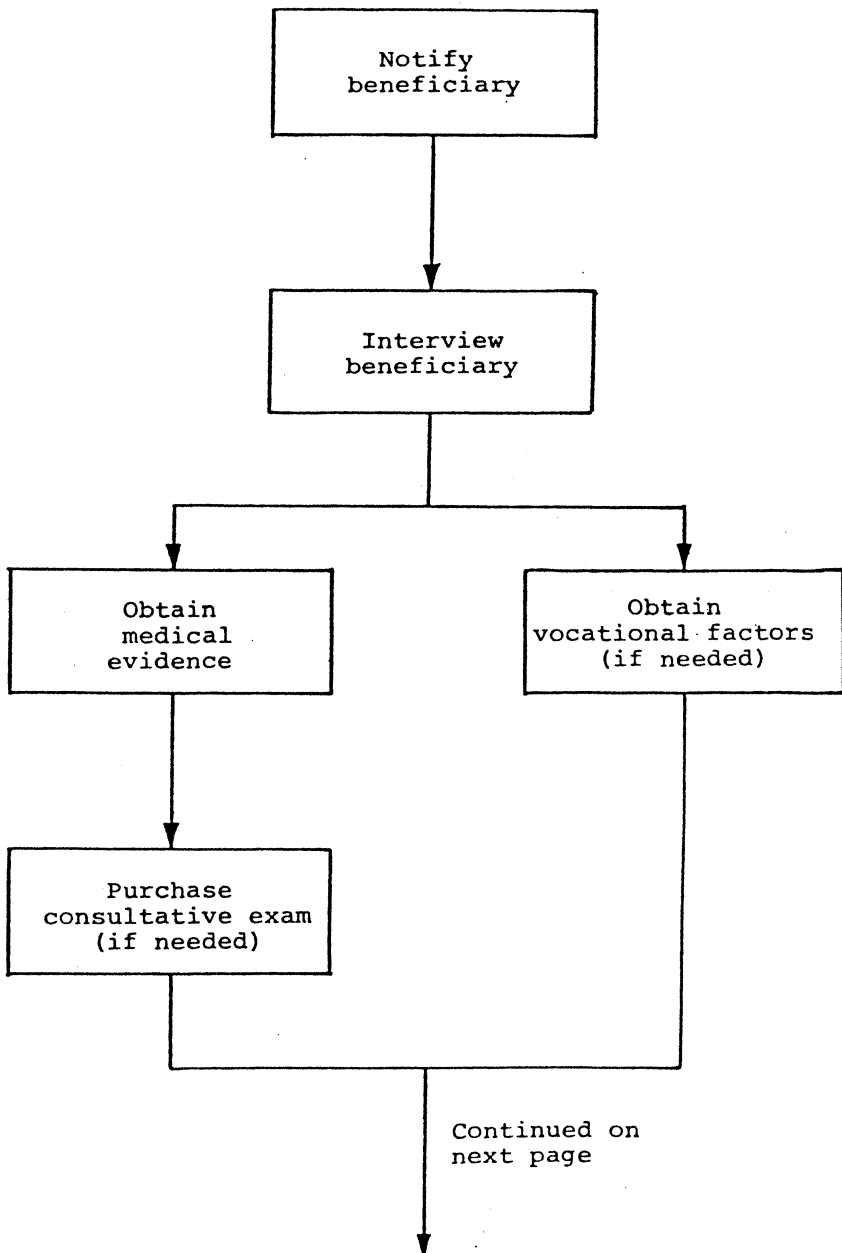
## CHART 13

## INITIAL ELIGIBILITY DETERMINATION PROCESS



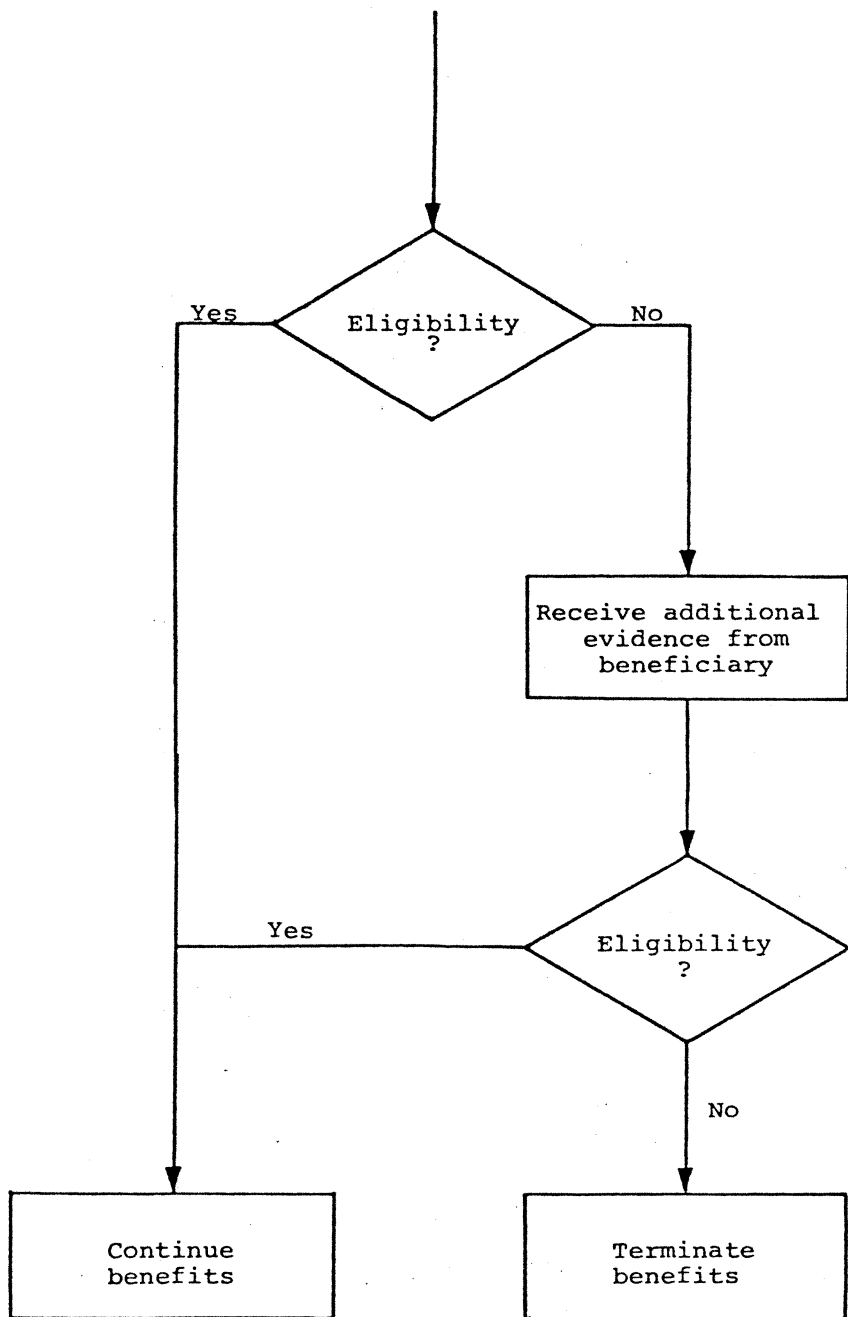
## CHART 14

## CONTINUING DISABILITY INVESTIGATIONS PROCESS



## CONTINUING DISABILITY INVESTIGATIONS PROCESS

(continued)



## CHART 15

HISTORY OF SIGNIFICANT PROVISIONS RELATING  
TO DI ELIGIBILITY REQUIREMENTS

<u>Act</u>	<u>Provision</u>
1956	<p>Monthly cash benefits provided for insured workers aged 50-64 unable to engage in substantial gainful activity because of a medically determined impairment expected to end in death or be of "long-continued and indefinite duration."</p> <p>Benefits payable after 6-month waiting period.</p> <p>Recent and substantial attachment to covered employment required: "currently insured" (6 quarters of coverage in the preceding 13 quarters, including the quarter of disablement), "disability insured" (20 quarters of coverage in the preceding 40 quarters, including the quarter of disablement), and "fully insured" (one quarter of coverage for each year after 1950 and prior to the attainment of age 65 for men, age 62 for women).</p>
1958	<p>Monthly cash benefits provided for the dependents of disabled workers.</p> <p>"Currently insured" requirement eliminated.</p>
1960	<p>Age 50 limitation eliminated. DI benefits made payable to insured workers (and their dependents) at any age under 65.</p> <p>"Disability insured" requirement eased.</p> <p>6-month waiting period eliminated for workers applying for benefits for a second time after failing in attempt to return to work.</p> <p>"Trial work period" of 9 months provided during which disabled worker may have earnings without having benefits terminated.</p>

- 1965 Duration of disability requirement eased from "long-continued and indefinite" to one lasting for at least 12 months.
- In the case of blind workers, aged 55-64, benefits made payable on the basis of inability to engage in usual occupation rather than inability to engage in substantial gainful activity.
- "Disability insured" requirements eased for blind workers under age 31.
- 1967 Definition of disability tightened so that the impairment must preclude engaging in any substantial gainful activity existing in the national economy.
- "Disability insured" requirements eased for all disabled workers under age 31.
- 1972 Waiting period reduced to 5 months.
- Medicare provided for disabled workers on the rolls for at least 24 months.
- For blind workers, "disability insured" requirement eliminated.
- 1977 SGA guidelines liberalized for the blind.
- 1980 Medicare provided for disabled workers for 3 years after leaving the benefit rolls to engage in substantial gainful activity.
- 24-month waiting period for Medicare eliminated for workers applying for benefits for a second time.

TABLE 49.—DI ADMINISTRATIVE COSTS

[Dollars in millions]

Calendar year	DI administrative costs	
	Total	As percent of DI benefits
1957 .....	\$3	4.9
1960 .....	36	6.4
1965 .....	90	5.7
1970 .....	164	5.3
1975 .....	256	3.0
1980 .....	368	2.4
1981 .....	436	2.5
1982 .....	590	3.4
1983 <sup>1</sup> .....	681	3.8

<sup>1</sup> Estimated under Intermediate II-B Assumptions contained in 1983 OASDI Trustees' Report.

Source: Social Security Bulletin, Annual Statistical Supplement, 1981, and 1983 OASDI Trustees' Report.