

1829

Y4.F49:
T17 66
sch. 5-B

+

**SLIDING SCALE ON SCHEDULE 5
SUGAR, MOLASSES, AND
MANUFACTURE OF**

H. R. 2667

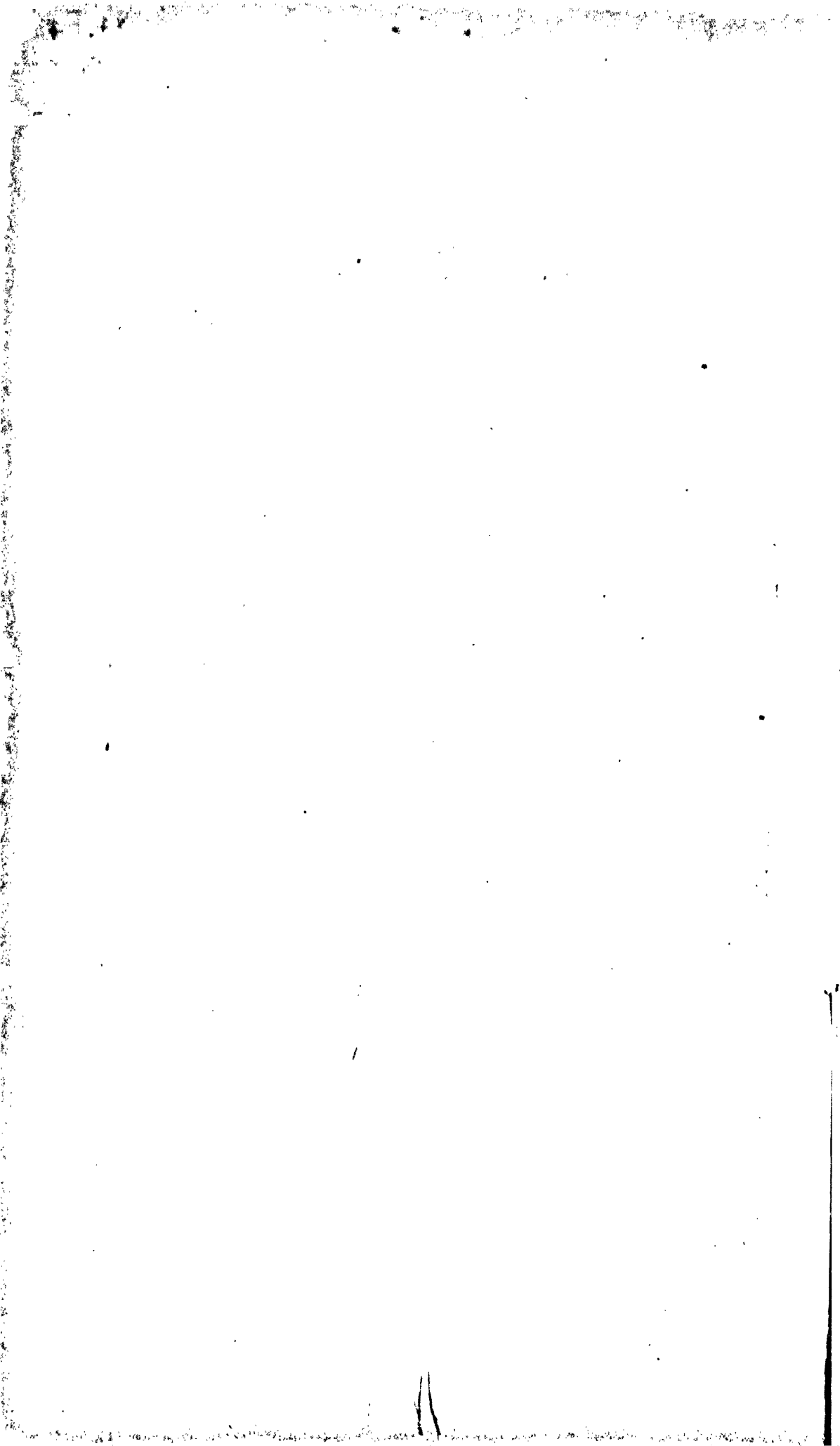
PROPOSED BY

**HON. REED SMOOT, OF UTAH
CHAIRMAN, UNITED STATES SENATE
COMMITTEE ON FINANCE**



**UNITED STATES
GOVERNMENT PRINTING OFFICE
WASHINGTON : 1929**

BEST AVAILABLE COPY



SCHEDULE 5.—SUGAR, MOLASSES, AND MANUFACTURES OF

PAR. 501. Sugar testing by the polariscope 96 sugar degrees, K cents per pound, where K equals eight and two-tenths cents (8.2 cents) minus the New York net cash price per pound of hard refined sugar, based on a 90-day weighted average determined weekly, for all net cash prices between five and two-tenths cents (5.2 cents) per pound and seven and two-tenths cents (7.2 cents) per pound, inclusive; provided that for all net cash prices of hard refined below five and two-tenths cents (5.2 cents) per pound K shall equal three cents (3 cents) and for all net cash prices of hard refined above seven and two-tenths cents (7.2 cents) per pound K shall equal one cent (1 cent). Sugars, tank bottoms, sirups of cane juice, melada, concentrated melada, concrete and concentrated molasses, testing by the polariscope not above seventy-five sugar degrees, and all mixtures containing sugar and water, testing by the polariscope above fifty sugar degrees and not above seventy-five sugar degrees [$K - (0.04 \times 21)$] cents per pound, and for each additional sugar degree shown by the polariscopic test, but not above ninety-eight sugar degrees, four hundredths of 1 cent per pound additional, and fractions of a degree in proportion; testing by the polariscope ninety-eight sugar degrees, $K + 0.0008$ cents per pound, and for each additional sugar degree shown by the polariscopic test, twenty-five one-hundredths of 1 cent per pound additional, and fractions of a degree in proportion.

Comparison of paragraph 501, act of 1922, with proposed paragraph 501, act of 1929

Smoot proposal, H. R. price and duty, 96° sugar basis		Degrees sugar	Cuban sugar, dollars per pound				
New York not cash price, dollars per pound	Full duty (K), dollars per pound		Fordney-McCumber Act, 1922	Hawley-Smoot Act, 1929			
			Increment, 0.000368	Passed by House	Smoot proposal, basis 96° sugar		
				Increment, 0.0005	Increment, 0.00032		
					Hard refined Price \$0.072 Duty(K).008	\$0.06 .0176	\$0.032 .024
\$0.075	\$0.010	75	0.0092	0.0125	0.00128	0.01088	0.01728
.074	.010	76	.010288	.0130	.00160	.01120	.01760
.073	.010	77	.010656	.0135	.00192	.01152	.01792
.072	.010	78	.011024	.0140	.00224	.01184	.01824
.071	.011	79	.011392	.0145	.00256	.01216	.01856
.070	.012	80	.011760	.0150	.00288	.01248	.01888
.069	.013	81	.012128	.0155	.00320	.01280	.01920
.068	.014	82	.012496	.0160	.00352	.01312	.01952
.067	.015	83	.012864	.0165	.00384	.01344	.01984
.066	.016	84	.013232	.0170	.00416	.01376	.02016
.065	.017	85	.013600	.0175	.00448	.01408	.02048
.064	.018	86	.013968	.0180	.00480	.01440	.02080
.063	.019	87	.014336	.0185	.00512	.01472	.02112
.062	.020	88	.014704	.0190	.00544	.01504	.02144
.061	.021	89	.015072	.0195	.00576	.01536	.02176
.060	.022	90	.015440	.0200	.00608	.01568	.02208
.059	.023	91	.015808	.0205	.00640	.01600	.02240
.058	.024	92	.016176	.0210	.00672	.01632	.02272
.057	.025	93	.016544	.0215	.00704	.01664	.02304
.056	.026	94	.016912	.0220	.00736	.01696	.02336
				Increment 0.001			
.055	.027						
.054	.028	95	.017280	.0230	.00768	.01728	.02368
.053	.029	96	.017648	.0240	.00800	.01760	.02400
.052	.030	97	.018016	.0250	.00832	.01792	.02432
.051	.030	98	.018384	.0260	.00864	.01824	.02467
					Increment 0.002		
.050	.030						
.049	.030	99	.018752	.0270	.01064	.02024	.02664
.048	.030	100	.019120	.0280	.01264	.02224	.02864
.047	.030						
.046	.030						
.045	.030						

Comparison of paragraph 501, act of 1922, with proposed paragraph 501, act of 1929—Continued

Smoot proposal, H. R. price and duty, 98° sugar basis		Degrees sugar	Full duty sugar, dollars per pound				
New York net cash price, dollars per pound	Full duty (K), dollars per pound		Fordney-McCumber Act, 1922	Hawley-Smoot Act, 1929			
				Passed by House	Smoot proposal, basis 98° sugar		
			Increment, 0.00046		Increment, 0.00025	Increment, 0.0004	
Hard refined Price \$0.072 Duty (K) .01	\$0.06 .022	\$0.082 .08					
\$0.075	\$0.010	75	0.0124	0.015625	0.0016	0.0136	0.0216
.074	.010	76	.01236	.016250	.0020	.0140	.0220
.073	.010	77	.01332	.016875	.0024	.0144	.0224
.072	.010	78	.01378	.017500	.0028	.0148	.0228
.071	.011	79	.01424	.018125	.0032	.0152	.0232
.070	.012	80	.01470	.018750	.0036	.0156	.0236
.069	.013	81	.01516	.019375	.0040	.0160	.0240
.068	.014	82	.01562	.020000	.0044	.0164	.0244
.067	.015	83	.01608	.020625	.0048	.0168	.0248
.066	.016	84	.01654	.021250	.0052	.0172	.0252
.065	.017	85	.01700	.021875	.0056	.0176	.0256
.064	.018	86	.01746	.022500	.0060	.0180	.0260
.063	.019	87	.01792	.023125	.0064	.0184	.0264
.062	.020	88	.01838	.023750	.0068	.0188	.0268
.061	.021	89	.01884	.024375	.0072	.0192	.0272
.060	.022	90	.01930	.025000	.0076	.0196	.0276
.059	.023	91	.01976	.025625	.0080	.0200	.0280
.058	.024	92	.02022	.026250	.0084	.0204	.0284
.057	.025	93	.02068	.026875	.0088	.0208	.0288
.056	.026	94	.02114	.027500	.0092	.0212	.0292
.055	.027			Increment			
.054	.028	95	.02160	0.00125 .028750	.0096	.0216	.0296
.053	.029	96	.02206	.030000	.0100	.0220	.0300
.052	.030	97	.02252	.031250	.0104	.0224	.0304
.051	.030	98	.02298	.032500	.0108	.0228	.0308
.050	.030				Increment 0.0025		
.049	.030	99	.02344	.033750	.0133	.0253	.0333
.048	.030	100	.02390	.035000	.0158	.0278	.0358
.047	.030						
.046	.030						
.045	.030						