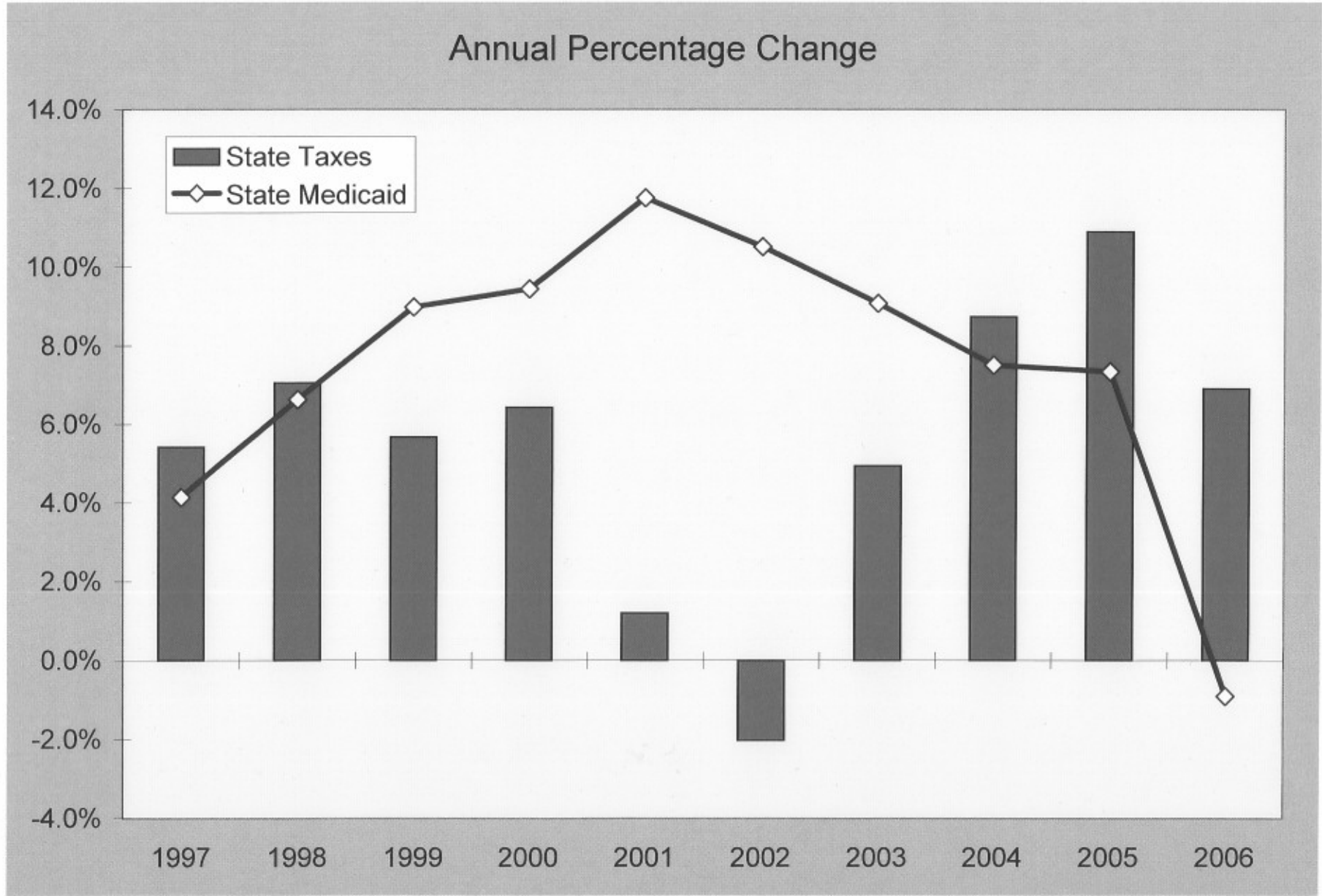


Chart 1



<http://www.bea.gov/national/nipaweb/Index.asp> (Table 3.20)

<http://www.cms.hhs.gov/NationalHealthExpendData/downloads/tables.pdf>

Table 1

## State and Local Government Finances by State: 2004-05

(\$Thousands)	Total Revenue	Federal Grants	State Taxes	% of Total
United States - Total	\$2,523,005,780	\$438,155,977	\$648,111,258	26%
Alabama	\$33,606,093	\$7,437,692	\$7,799,948	23%
Alaska	\$11,334,457	\$2,553,249	\$1,858,311	16%
Arizona	\$41,134,826	\$8,238,501	\$11,008,428	27%
Arkansas	\$18,876,794	\$4,338,891	\$6,552,449	35%
California	\$380,476,699	\$54,578,422	\$98,434,685	26%
Colorado	\$38,930,181	\$5,102,276	\$7,648,456	20%
Connecticut	\$30,584,258	\$4,448,985	\$11,584,728	38%
Delaware	\$7,638,188	\$1,184,432	\$2,590,217	34%
District of Columbia	\$9,326,744	\$2,814,574	\$0	0%
Florida	\$135,338,670	\$21,097,833	\$33,894,971	25%
Georgia	\$60,292,959	\$10,573,988	\$15,675,655	26%
Hawaii	\$11,000,269	\$1,964,554	\$4,434,356	40%
Idaho	\$10,003,867	\$1,876,814	\$2,934,459	29%
Illinois	\$100,447,028	\$15,387,326	\$26,411,689	26%
Indiana	\$43,792,014	\$7,192,834	\$12,853,976	29%
Iowa	\$23,249,871	\$4,380,491	\$5,750,629	25%
Kansas	\$19,921,338	\$3,402,605	\$5,598,700	28%
Kentucky	\$28,043,814	\$6,115,805	\$9,090,882	32%
Louisiana	\$35,847,751	\$7,848,173	\$8,638,674	24%
Maine	\$11,346,337	\$2,647,192	\$3,071,161	27%
Maryland	\$45,327,471	\$7,540,629	\$13,497,281	30%
Massachusetts	\$61,507,149	\$9,198,142	\$18,014,681	29%
Michigan	\$81,370,429	\$14,195,442	\$23,525,187	29%
Minnesota	\$45,464,495	\$7,307,853	\$15,881,131	35%
Mississippi	\$21,092,104	\$5,987,016	\$5,432,152	26%
Missouri	\$41,339,990	\$8,573,060	\$9,543,814	23%
Montana	\$7,438,139	\$2,002,965	\$1,875,545	25%
Nebraska	\$15,883,267	\$2,668,570	\$3,796,551	24%
Nevada	\$18,953,181	\$2,240,559	\$5,670,169	30%
New Hampshire	\$8,924,491	\$1,625,172	\$2,022,146	23%
New Jersey	\$77,812,162	\$10,626,825	\$22,933,999	29%
New Mexico	\$16,649,605	\$4,258,072	\$4,471,477	27%
New York	\$231,011,453	\$45,701,539	\$50,190,396	22%
North Carolina	\$64,823,562	\$13,066,924	\$18,639,618	29%
North Dakota	\$5,240,123	\$1,311,019	\$1,403,293	27%
Ohio	\$102,601,496	\$17,182,975	\$24,006,560	23%
Oklahoma	\$24,552,073	\$5,179,250	\$6,859,030	28%
Oregon	\$32,392,874	\$5,257,787	\$6,522,665	20%
Pennsylvania	\$103,730,295	\$19,258,927	\$27,262,969	26%
Rhode Island	\$9,729,274	\$2,106,180	\$2,628,747	27%
South Carolina	\$33,276,639	\$7,100,845	\$7,318,388	22%
South Dakota	\$5,824,750	\$1,369,870	\$1,110,035	19%
Tennessee	\$43,686,248	\$9,071,470	\$10,007,292	23%
Texas	\$163,057,453	\$28,960,854	\$32,784,942	20%
Utah	\$19,186,196	\$3,219,817	\$4,686,381	24%
Vermont	\$5,392,814	\$1,313,181	\$2,242,902	42%
Virginia	\$56,858,890	\$6,934,683	\$15,918,847	28%
Washington	\$57,586,458	\$8,336,629	\$14,839,634	26%
West Virginia	\$14,739,417	\$3,540,319	\$4,301,156	29%
Wisconsin	\$48,429,818	\$7,100,591	\$13,152,250	27%
Wyoming	\$7,931,306	\$2,734,175	\$1,739,646	22%